

# AUTOMATIC SMD PICK & PLACE MACHINES

## KAYO A2 / A4



The KAYO A2 and A4 are automatic SMT placement stations. The A2 model is an off-line table version, the A4 model is a table model with conveyor.

Compact, they can accommodate 25 8mm feeders and 2 cameras for the A2 and 46 8mm feeders for the A4 as well as 6 placement and positioning cameras. The placement accuracy is 0.01 mm for a placement capacity of 6000 components per hour (max.) for the A2 and 7000 components per hour (max.) for the A4.

Quick to set up and easy to handle, the A2 and A4 pick and place machines are ideal for the assembly of your prototypes / micro-series.

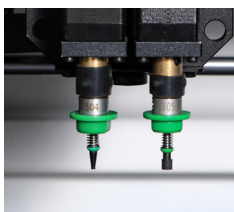
### Points forts:

- The KAYO A2 comes with 2 cameras: 1 for pattern detection and 1 for component recognition
- The KAYO A4 comes with 6 cameras: 1 for pattern detection, 4 fast cameras and 1 high precision camera for component recognition.
- Max. placement capacity of 6000 to 7000 CPH with an accuracy of  $\pm 0.01$  mm (theoretical)
- Runs under Windows® environment
- The drivers have been optimized to ensure fast placement of components while increasing accuracy with a low noise level
- The Pick & Place A4's conveyor system offers time saving and accuracy

### KAYO A2 Off-line model



HD recognition camera

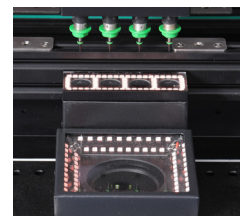


2 nozzles

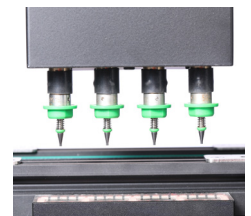
### KAYO A4 in-line model



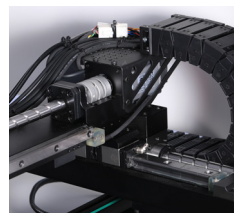
PANASONIC®  
SERVO MOTOR



4 caméras de placement  
+ 1 high precision



4 nozzles



Linear guide rail TBI



Internal conveyor



1 control screen