

# DEN-ON INSTRUMENTS



# INTRODUCTION



InterElectronic Hungary Ltd. offers equipments, machines and different materials (ESD) of different production technologies (SMT/THT/LED). Including high quality, special request fulfilling soldering machines, devices, tools, instruments and materials for the electronic industry and services.

## SERVICES

Our each and every product has a warranty granted by the InterElectronic Hungary Ltd. For more complex appliances our company offers a well-needed training for set up and usage. We grant the repair of all of the products traded by our company during and after the warranty period. As well as we guarantee the continuous supply of accessories and instruments.

## DEMONSTRATON

In case if any of our products aroused your interest the InterElectronic Hungary Ltd. would be glad to visit your company and hold a presentation of the product of your interest. As far as possible we serve you by bringing demo devices with us. In the most cases of our products we are proud possessors of references nation-wide. Major machines also could be observed at our partners' site.

## PRICE LIST

Most of the prices of our products can be requested on our website and will be sent via email to you. In case of special and more complex machines the prices are given after consultation individually through a price offer. If you are interested in more information or user manuals of our products we recommend you to visit our website ([www.interelectronic.com](http://www.interelectronic.com)), which is updated continuously with professional information. We also recommend you to visit our office, where you can purchase any of the needed devices and spare parts of the product of your interest.

## ORDER/SHIPPING

Our soon to be partners are welcomed to be helped via telephone, fax or e-mail. We use different ways of delivery, depending on the preference of our partner. We can deliver your purchased product by ourselves, by freight or courier service. The way of delivery might be negotiated previously. We offer you cash on delivery nation-wide!

# TABLE OF CONTENT

The company was first founded under the name of Denon Corporation on September 19, 1963. It was established with the purpose of research, development and design of sound systems for studios and music halls. After that, it became involved in the broader area of sound and music control boards and other similar systems. In 1982, a significant portion of the company became involved in the soldering and desoldering industry and the company then changed its name to Denon Instruments to more appropriately match the new direction of the company. It was at this point that DIC Trading was established as a separate company to handle all the sales, marketing and promotion activities of the company.

Product name	Page
Rework System	4
SC-7000Z	4
RD-500V/RD-500SV	10
SD-3500	12
SD-3000II	14
Soldering Tools	14
SS-8200	16
SS-8300	18
Desoldering Tools	18
SC-400A	20
Pre-heater	22
PH-400	22
PH-3100A	24



All products in our catalog are ESD safe.

# SC-7000Z

## Gun type with Versatelite Function

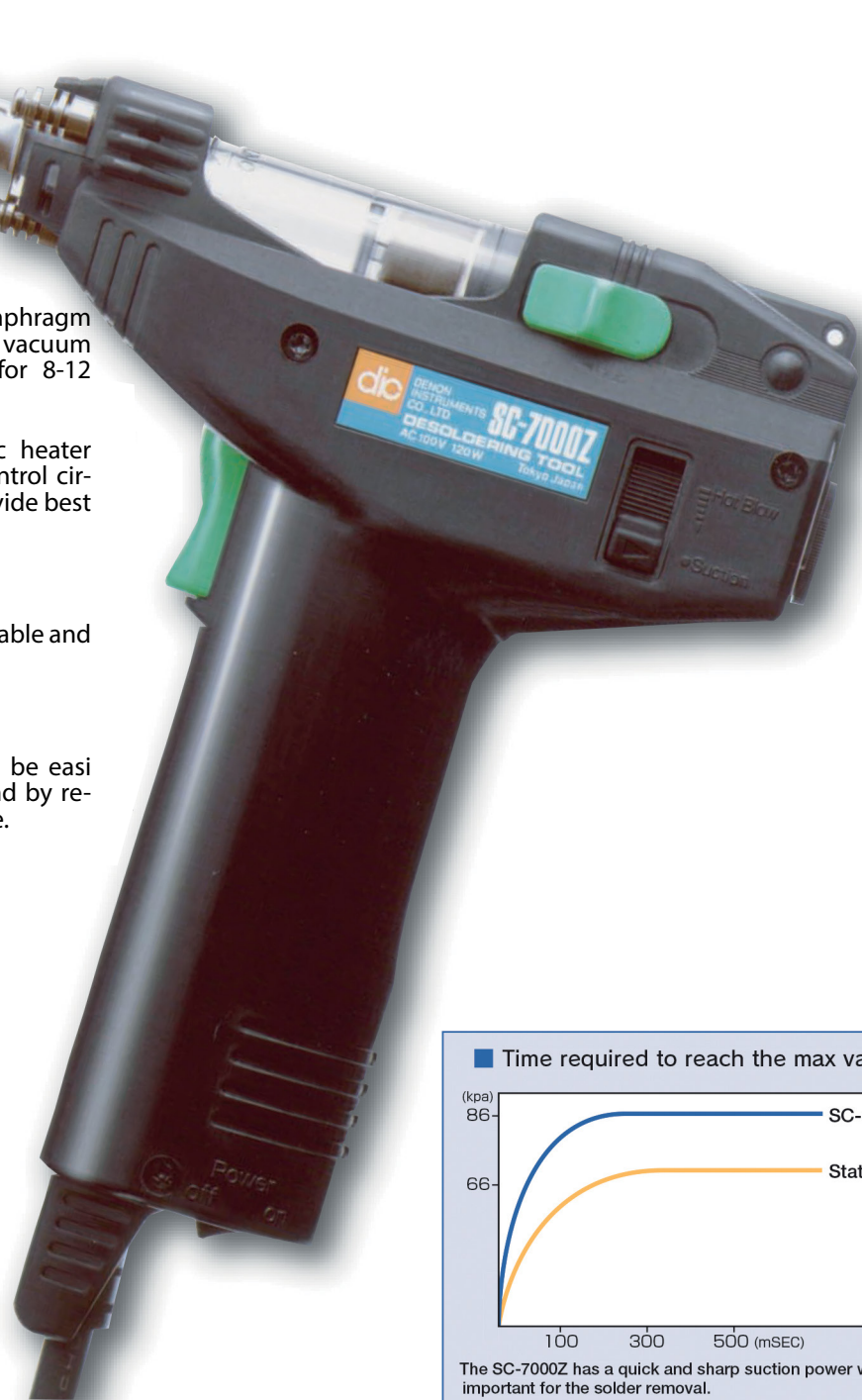
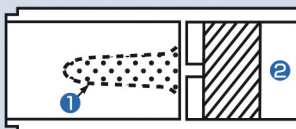
### Designed For Lead Free

Suction capacity and hot blow system are further powered up. Removal of chip, SMD components, SMT solder residue clean up is done with more ease and more efficiency. Dic SC-7000Z is of the pump built in structure with a temperature control circuit. Best tool recognized all over the world.

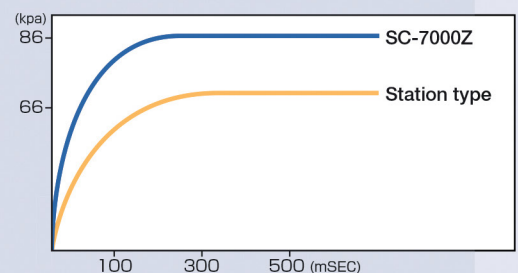
#### POINTS

- Direct connection between the diaphragm pump and the tip can provide high vacuum efficiency which can accommodate for 8-12 layers PCB.
- The Combination of a 100W ceramic heater with sensor feed-back temperature control circuit and high vacuum capacity can provide best work efficiency with no failure.
- Protection against ESD is secured.
- Quite compact, light-weight unit is portable and ready to use at any location.
- Low noise and low vibration
- The removal of SMD components can be easily done by a flick of the selector lever and by replacing the tip with the hot blow nozzle.

The patented filter cartridge will last a long life.  
Most of the removed solder and flux is accumulated as shown the dotted line ① so that the filter ② can be kept clean for longer time.  
Dispensable with low cost.



■ Time required to reach the max vacuum



The SC-7000Z has a quick and sharp suction power which is most important for the solder removal.



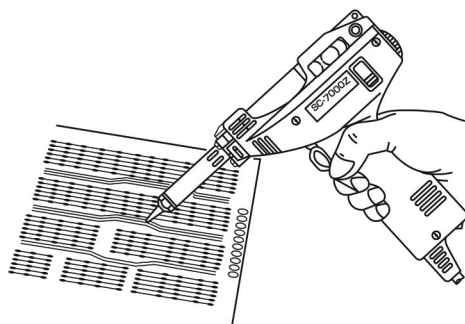
# SC-7000Z

## DESOLDERING TOOL

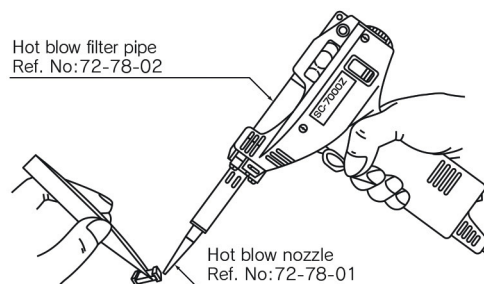
### Gun Type multi function desoldering tool

### “Designed to remove SMD/SMT Components”

#### ■ Removing solder of DIP by the suction tip



#### ■ Removal Chip IC using the hot blow mode



※ Pre-heater combined use is advised

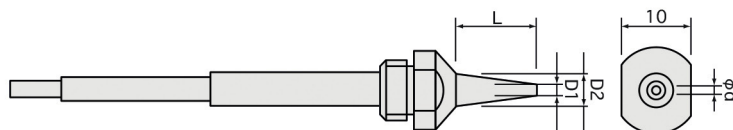
#### Specification

Voltage	AC100V·120V·230V 50/60Hz
Power Consumption	120W
Pump	Diaphragm Tip
Motor Output	12W
Vacuum Attained	-86Kpa
Time required max vacuum	0.1 sec
Air flow rate (OPEN)	15L /min
Heater	100W (Ceramic)
Control System	Feedback zero cross over type
Temp. range	350°C~500°C
Insulation resistance	More than 100MΩ
Max. Temp. of hot blow	400°C
Weight	420g

#### Optional Tip

Ref. No:	Specification	Marking	φd	φD1	φD2	Lmm
50-01-11	0.8 Std	0.8	0.8	2.5	7.0	12.5
50-01-12	0.8 SLIM	0.8S	0.8	2.0	6.0	14.0
50-01-13	0.8 U.SLIM	S8	0.8	1.5	5.0	11.5
※ 50-01-14	1.0 Std	1.0	1.0	2.5	7.0	12.5
50-01-15	1.5 Std	1.5	1.5	3.0	7.0	12.5
50-01-16	1.0 SLIM	10S	1.0	2.0	6.0	14.0
50-01-17	1.5 SLIM	15S	1.5	2.2	6.0	14.0

※ Tip Ref.No:50-01-14 is fitted in the main body.



CE (PS E) Certificated Product

#### OPTION

- Filter Cartridge inclusive (5 pcs/set)  
Ref. No: (70-08-00)



- ST-800 (Tool stand)  
Ref. No: (08-00-00)  
Fore convenient and safe work.



- SMT Filter Cartridge (Glass made)  
Ref. No: (70-08-20)



- Kit for hot air (Hot air nozzle, Hot air filter pipe)  
Ref. No: (72-78-10)

- Combination Option for a better use  
Spot Pre-heater to help fast and efficacy cleaning.

- PH-400



## RD-500V | RD-500SV



# RD-500V

**NEW**

All-IN-ONE Advanced Technology SMT Rework Station Compatible For The Rework Of All Different Types Of SMT Components Compact & Stable, Designed for 7d/24h Shifts

# RD-500SV

**NEW**



## Multi -Functional Profiles - Easy Edit

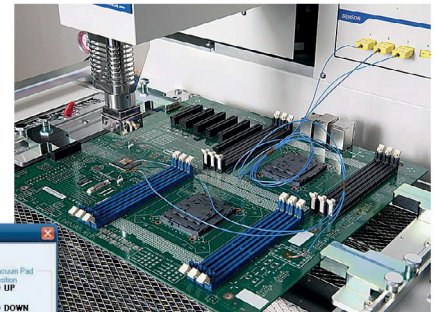
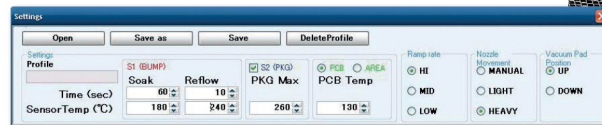
### Managing and Editing Your Profiles Easily

You can control the temperature from the basic 5 zones up to a maximum of 30 zones, in whichever way you want. This way you can freely produce a very detailed temperature curve. In addition to this temperature management , you can easily edit the equipment's mechanical operations per zone, ie. heater, pickup tube height settings , audible alarms, etc...

	Preheat	Ramp1	Soak	Ramp2	Reflow	ADD	ADD	ADD
Time sec	67	45	60	41	10	3	5	20
Temp Top °C	130	250	190	340	270	0	0	270
Temp Btm °C	200	280	280	430	450	450	450	450
Temp Area °C	450	450	450	450	450	450	450	450
Position Nozzle	-1.3	-1.3	-1.2	-1.2	-5.0	80.0	80.0	-5.0
Engage Nozzle	Invalid	Invalid	Invalid	Invalid	LIGHT	LIGHT	LIGHT	LIGHT
Posi Vacuum Pad	DOWN	DOWN	DOWN	DOWN	DOWN	DOWN	DOWN	DOWN
Activate Suction	OFF	OFF	OFF	OFF	ON	ON	OFF	OFF

### 3-Point Auto - Profiling

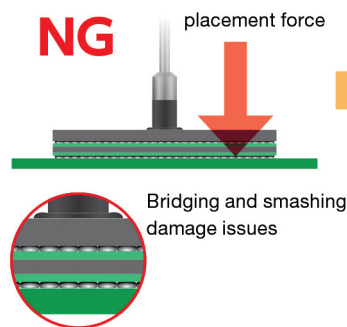
Create a profile automatically by targeting preset values for the following, solder paste, device surface, and circuit board surface. With this feature all of the heaters during the "learning mode" will be regulated automatically to achieve the desired preset values.



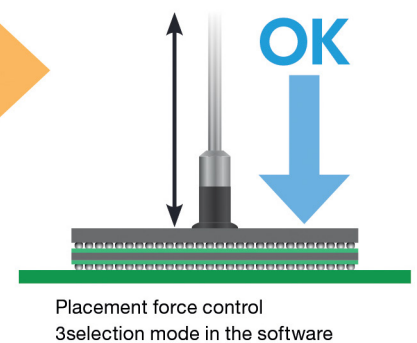
### One click advanced settings are supported in Easy Selection mode

Components like QFN, QFP and others have a movement phenomena that occasionally occurs due to flux activation which could cause misalignment or skewing of the part during this stage of the heating cycle. These variations in position make it necessary to add a certain amount downward pressure or force to the components. Also in order to perform operations of multiple steps for the removal of certain components like POP it becomes necessary to repeat the movement of the Z axis. In the advanced settings mode it is possible to configure these movements per zone.

#### Ex: Issue with POP



#### POP Solution RD-500V



### Managing the equipment through the Login Mode

Engineer mode: Create or modify a profile

Operator mode: Performs tasks created by the engineer

\*Engineer Mode and Operator Mode Can Be Setup With Password Protection



# RD-500V | RD-500SV

**Wide support to industrial large-scale and small-scale circuit boards, including 01005 components**



**RD-500V**

Maximum PCB size 500 mm x 700 mm

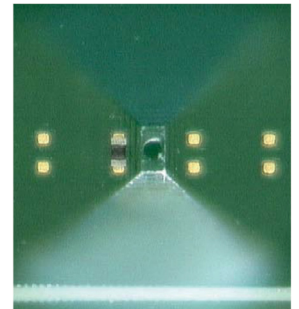


**RD-500SV**

Maximum PCB size 400 mm x 420 mm

## A strong support for the rework of < 01005 devices

The soldering of delicate parts is a very difficult procedure, limited to specific workers. It is also necessary to suppress the effects of heat on the surrounding areas. We have made the solution of such problems possible with the application of this equipment. We have determined that using conductive heating method more efficient through the heat-conduction system, and that it also allows for an operation with optimal suppression of the effects of heat on surrounding components. We have also developed nozzles for the smallest of components, and the results of its inspection showed that when detaching a target component, we have successfully managed to keep the temperature in an area 1 mm around said component below lead free melting points. This has allowed for the reworking of a targeted area without compromising the soldering of nearby components.



### ■ Two Mega Pixels Full HD Camera with a 19 Inch LCD Display For Easy Visual Alignment

By using a high-vision camera with 2mega pixels and capacity for a 120x zoom, you will be able to clearly identify patterns and the alignment of its components, as well as the smallest components. It is also possible to have an HD output if you choose to connect it to an HD monitor.

\* Compatible with the options at the time of order

### ■ Ten Times improved Sampling Accuracy Temperature Control

The RD-500V/SV samples the data in very small intervals of 0.1 sec, allowing for a very accurate temperature control.

### ■ Built in high power, high response heaters

It is equipped with powerful 1000W heaters on both the top and bottom, and the area heater has six 600W IR heaters, which build up heat very quickly.

Each heater can operate at high output rates and respond quickly, so that the desired temperature is reached immediately.

Moreover, it only requires retaining warmth when executing a profile, which allows for a reduction of energy usage when in stand-by mode.

### ■ Two Pressure sensors

When installing or detaching a component, the height reading changes with the thickness of the component itself. When the pickup tube makes contact with the device it will automatically calculate the height and the pressure will automatically be used from a selected rate in the software.

### ■ Non-Contact Cleaning -Auto High Sensing Control

There is a risk that when cleaning a site that adjacent components or lands can be damaged by conventional solder iron and wick cleaning, this is very dependent on the skill of the individual personnel performing the cleaning.

In order to solve this problem, the optional cleaning nozzle can be used together with the side-view camera to remove the solder without any contact, and to assist in later installations.

### ■ Control of the Z-axis

For controlling of the subtle changes in height of the part to the nozzle during heating, the system uses a lead screw with programmable motors to insure that the height and pressure stay at a constant and saves automatically any changes during the process.

Adding further to the value input through the software, the height value of a sensible manual operation is numerically converted and automatically saved.

### ■ Machine Matching Capability

It is possible to share and transfer profile data between multiple machines with the same configuration and under similar conditions.

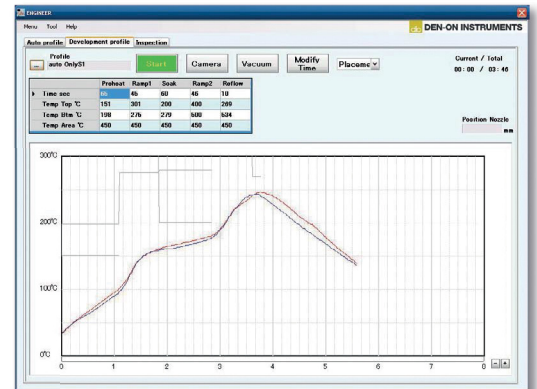
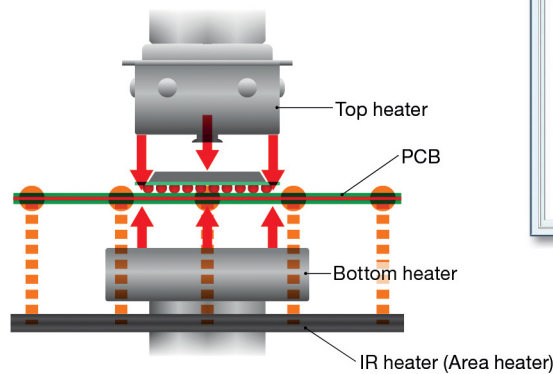
### ■ On the fly profile programming

Allow to modify the profile time within a zone, while the profile is running.

This is time saving for the engineer to help create the most accurate profile on the fly.

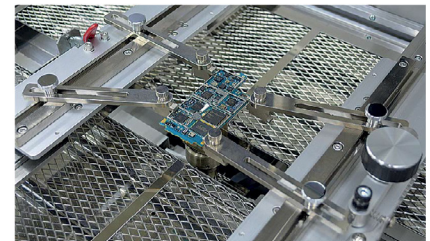
## High Performance 3 Point Heating System

This device is equipped with a time saving function called Auto Profiling which assist the user in creating profiles in a easy manner. It is initiated in the software which controls the functions of 3 independent heaters on the machine. The 3 heaters which are two localized hot gas heaters, and a area array IR heater are controlled thru thermocouples strategically located on the PCB being profiled which gathers the data during the heating cycle and automatically process the profile that the engineer has created.



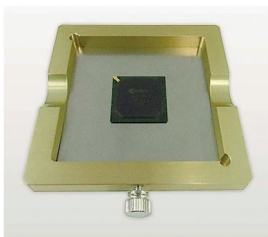
## From large to small-scale a versatile circuit board holder

Using its slide-clamp system, it can freely adjust the insert point, and hold a very reliable grip while avoiding other components such as connectors and sockets. Moreover, you can use additional clamp holders to stabilize thick and heavy circuit boards and perform any operation.

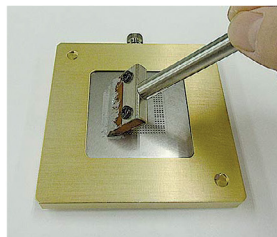


## Easy Operating, CPS - Component Print Station, and AFD - Auto Flux Dipping

Using the enclosed solder printing tool, you can print solder paste directly into any device's solder ball. (Since it's configured for a multitude of applications, it is possible to operate with many components by simply changing the component's metal mask) Furthermore, the solder's release property changes for every user. Since the device always picks it up with a different, specific speed, it is possible to achieve satisfactory results with each use.



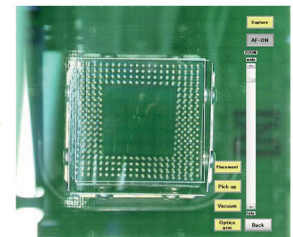
Align with the metal mask's component external line, insert the device, and cover.



Turn the solder printing tool inside out and print the cream solder on the device.



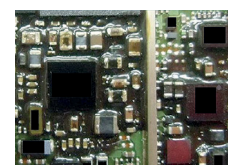
Place the CPS or AFD on the optic arm, press start and it will automatically pick the part from the tool, this automation prevents any smearing of the paste or the flux.



Display on a high-vision screen and align the PCB and the device.

## Flexible support also for components with underfill

In recent years, the demand for smartphones and tablets has been growing steadily, and a application of underfill is the natural step to take. Rework operations in those components coated with underfill are time-consuming, if compared to the usual SMT components. The most important part in a series of operations is removing the component while applying heat to it. In the removal process, the device's adsorption is eclipsed by the viscosity of the underfill. Therefore the removal becomes a challenge, and it is necessary to use an instrument such as tweezers and perform it with a rapid hand movement. Using the RD-500V's Underfill Mode, everything from the heating to the position of the head parts is adjusted automatically. Therefore the device performs every operation automatically, except the removal of parts.





## Safety Features

**RD-500V has unique safety features, it will run safely and simple.**

### Initial check feature

When you supply the equipment with power, you can check all the drive sensors, heating functions and the current status of the air supplies. In case some problem occurs, the software displays an error message and the device's operation will be suspended.

### Air flow sensor

If the air supply is cut off then the operation of the device will automatically stop.

### Heater overload sensors

Each of the Hot Air Heaters has a Thermo-protector attached to the outside of the unit. It is there to sense if heater goes into an out of control overheat condition. If this happens, then the Thermo-protector would sense the heat from the outside of the heater and cut off the power going into the heater then the machine will stop automatically.

### Anti-malfunction Sensor

If for some reason the heating exceeds a specified limit, the equipment will stop operating automatically.

### Top heater unit has separate detection function

When the top heater descends, in case there is an increase in pressure above specified limits, the heater arm will be detached and the descent will be halted.

### Optic components running on low power

The optics mechanical arm operates on very low torque which can be stopped on the touch of a finger, therefore it is safe to touch it even when the equipment is being operated.

### Security Check

Since everything is password-protected by the Login Mode, there is no risk of changing a profile's configurations or deleting a profile by mistake. Furthermore, since the scope of the program's possible usage is limited by the Login Mode, you can perform your work without complications.

## Standard Nozzle



Nozzle without Adjustable Walls

Part #	Size in mm (Inside Dimension)
BNZ-07	7x7
BNZ-09	9x9
BNZ-13	13x13
BNZ-15	15x15



Nozzle with Adjustable Walls

Part #	Size in mm (Inside Dimension)
BNZ-18	18x18
BNZ-20	20x20
BNZ-22	22x22
BNZ-24	24x24
BNZ-26	26x26
BNZ-28	28x28
BNZ-30	30x30
BNZ-32	32x32
BNZ-35	35x35
BNZ-37	37x37
BNZ-39	39x39
BNZ-44	44x44
BNZ-49	49x49
BNZ-52	52x52

## Accessories

- Controller (PC-500V)
- LCD Display
- Two bottom heater nozzle (large and small)
- Pick-up suction pad
- Thermo Couple K-Type (5Pieces)
- BP-500 Solder printing jig (Less stencil)
- Squeegee

## Options



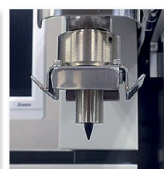
Multi Parts Holder



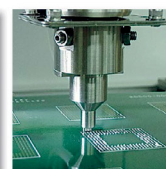
Odd size/shape PCB Holder



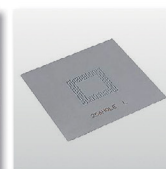
One Touch Universal XY Board Support



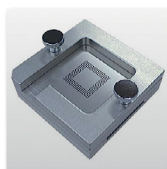
Passive Components Tip Nozzle(01005)



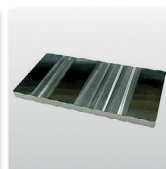
Contactless Site Cleaning Nozzle



Stencils



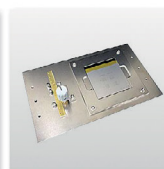
Reball Kit



Dipping Jig



Side View Camera



01005 Feeder



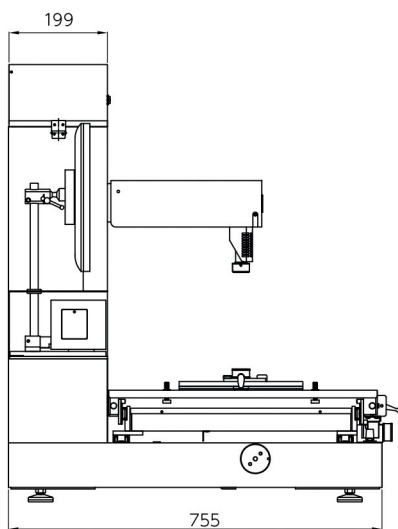
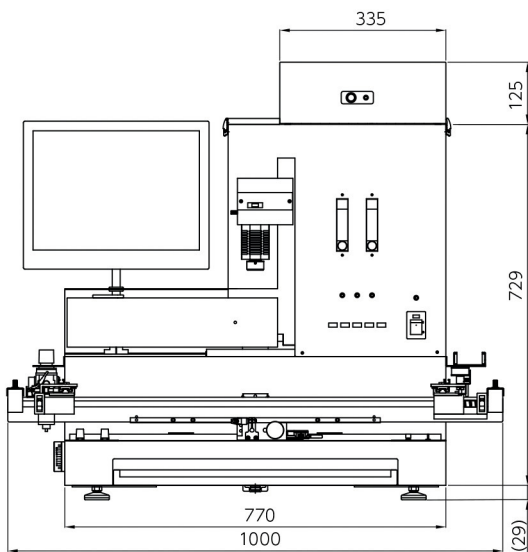
Non Contact IR Sensor



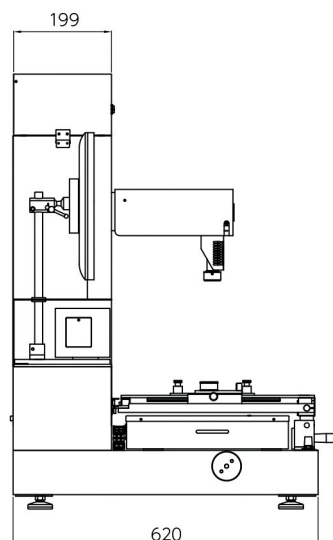
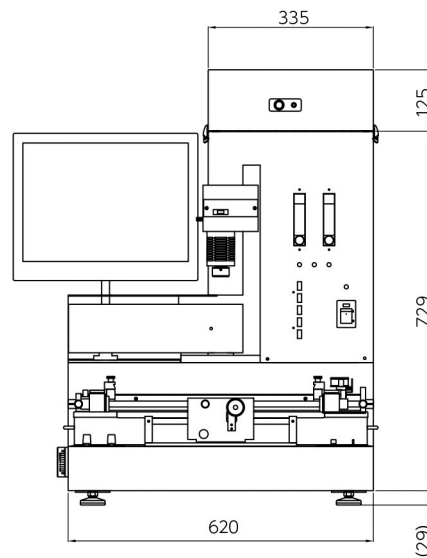
Maintenance software

# RD-500V | RD-500SV

**RD-500V**



**RD-500SV**



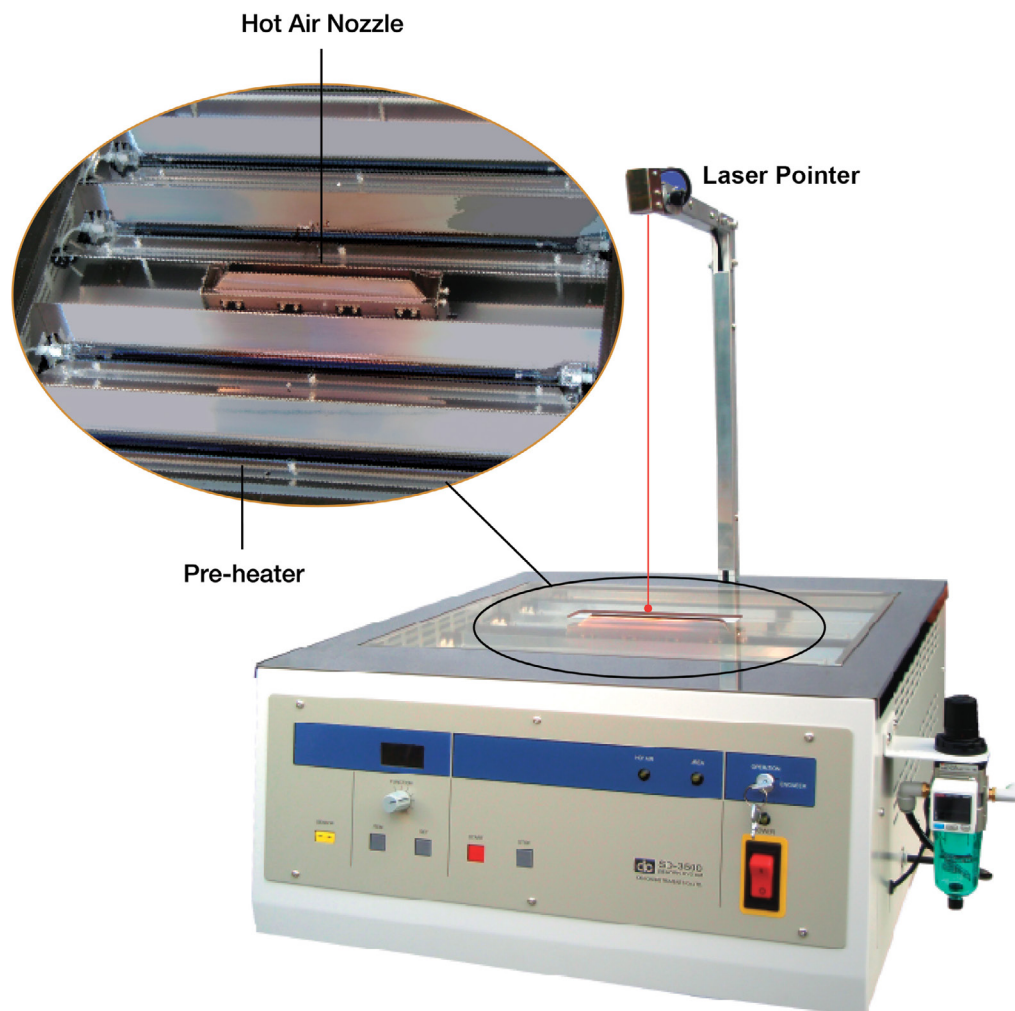
500 x 700 mm (28" x 20")	Maximum board size	400 x 420 mm (16" x 17")
01005 (0402 mm) or more *1	Device size range	01005 (0402 mm) or more *1
±0.015 mm	Placement Accuracy	±0.015 mm
AC200-240 V 5.6 kW	Electrical Requirement	AC200-240 V 4 kW
1000 W	Top Hot Air Heater	1000 W
1000 W	Bottom Hot Air Heater	1000 W
600 W x 6 IR 3600 W	Area Heater	500 W x 4 IR 2000 W
0 to 650 °C	Temp setting range	0 to 650°C
Dedicated controller (PC-500V)	Operating System	Dedicated controller (PC-500V)
19 inches LCD	Monitor	17 inches LCD
770W x 755D x 854H mm (30.31" W x 30.518"D x 34.76"H)	External dimensions	620W x 620D x 854H mm (24.4"W x 24.4" x 34.76"H)
100 kg (220.46 LBs)	Machine Weight	70 kg (154.32 LBs)
0.7 MPa 110 L/min (90 PSIG)	Air Requirements	0.7 MPa 110 L/min (90 PSIG)

# SD-3500

## Connector Replacement Machine

### Hot Air Connector Removal Machine

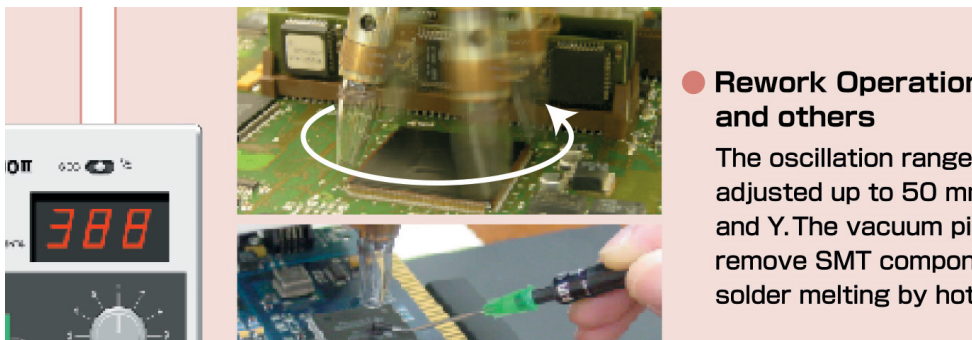
### Uses Hot Air for Safer Rework of Connectors



### Features

- **Hot Air Reflow Heating Source**
  - Prevents Dissolution of PCB Lands and using N2 will Reduce Oxidation
  - Eliminates the need for solder replacement, only requires electricity and air
- **Built-in Preheater**
  - No Need for Separate Preheat which Significantly Reduces Board Stress

# Connector Replacement Machine



## ● Rework Operation and others

The oscillation range is adjusted up to 50 mm and Y. The vacuum pick remove SMT components solder melting by hot

### Compact Front Control Panel

Smartly arranged front panel allows for quick start-up and use

### 7 Segment LED Display

Equipped with a 7 segment display that shows temperature and a variety of other errors Allows confirmation of the work

### External Thermo-couple Input

Solder melt temperature can be measured by connecting a K-type thermocouple to the solder area. Allows for a more controlled method of working instead of working by "feel".

### Internal Memory and Security Functions

Up to 10 different profiles can be stored into memory and called up with a simple touch of a button. Unauthorized change of a profile can be prevented by using the security setting which prevents the user from changing the profile.

Specifications		Accessories
Heating Method	Hot Air Nozzle, 350W , 4mm dia.	Vacuum Pick(Tweezer)
Airflow Rate	1.5L - 12L/min in 8 Steps	3 Suction Pads(Cups) for Vacuum Pick
Compressor/Vacuum Pump	Internal, Does not Require Shop Air	5 Filters for Vacuum Pick(Tweezer)
Working Range Maximum	X & Y: 0-50mm      Z: 25mm	Base Plate with 430mm x 300mm
Temperature Control	Analog with Digital Readout for 260 to 600°C	2 for PCB Holder Small (P/#H-1)

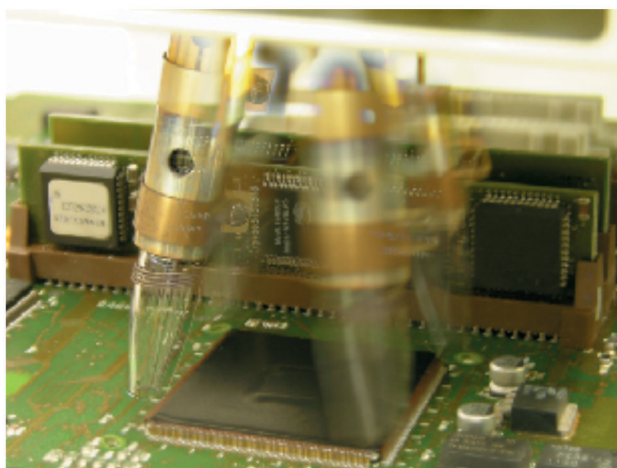
Specifications	
Power	200-240 VAC, Single Phase
Power Consumption	3.4 Kilowatts
Air Requirement	35kpa (functions between 30-40kpa)
Heaters	Main Heater-Hot Air 1400W (4 x 350W) Area Heater-Infrared 2000W (4 x 500W)
Heat Control	Main Heater-200-500°C ( in 5°C steps) Area Heater-300-500°C ( in 10°C steps)
Error Protection	External Air Supply Problem Main or Area Heater Overheat condition Internal Memory Check



# SD-3000 II REWORK SYSTEM

**Simple & Precise Operation.  
You Can Rework Nearly Any SMT Component**

This rework system is designed to remove most SMT component like QFP, SOP, PLCC SOJ, PGA, BGA, Connector and others. It does not require any special nozzles or additional accessories.



## Standard Accessories

- Vacuum Tweezer with Tube
- 2 for PCB Holder Large (P/#H-2)
- 2 for PCB Holder Small (P/#H-1)
- PCB Support Pin (P/#H-3)
- Thermo Couple
- 5 Filters for Vacuum Pick (Tweezer)
- Base Plate with 430mm x 300mm
- Base Plate Stand (P/#S-1)
- Metal Frame (P/#20-10-10)
- 3 Suction Pads (Cups) for Vacuum Pick (Tweezer)

## Features

- Can handle most SMT parts of up to 50mm square without requiring different nozzles.
- Can remove SMT connectors by setting a single axis motion.
- The built in timer enables to prevent damage of PCB and near by parts caused by over heating.
- Anybody can use this system without difficulty due to the simplified programming.
- Compact and light weight.
- Low cost, highly efficient.
- Can rework the micro components like 0603



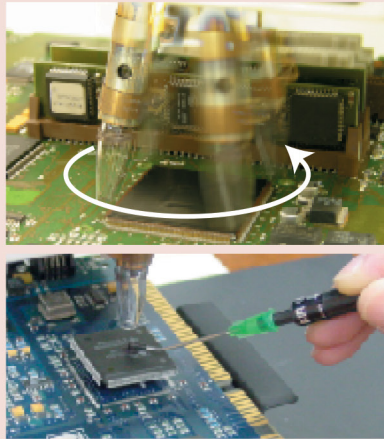


# SD-3000 II REWORK SYSTEM

## Control Panel

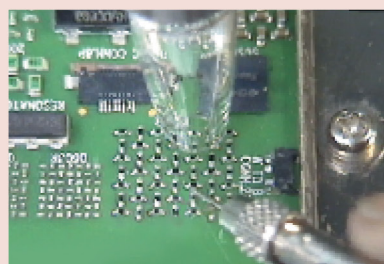


## Operation



### ● Rework Operation of QFPs and others

The oscillation range of Nozzle can be adjusted up to 50 mm in the axis of X and Y. The vacuum pick is used to quickly remove SMT components when the solder melting by hot blow air.



### ● Rework Operation of Micro-components

Set the X & Y Axis Knob at 0 and set the Blow Knob at 1 to 2. Confirming the target component with the optional camera and tool kits for small component or a magnified mirror, the removal can be done.

## Specifications

Heating Method	Hot Air Nozzle, 350W , 4mm dia.
Airflow Rate	1.5L - 12L/min in 8 Steps
Air Pump/Vacuum Pump	Internal, Does not Require Shop Air
Nozzle Range Maximum	X & Y: 0-50mm    Z: 25mm
Temperature Control	Analog with Digital Readout for 260 to 600°C
Timer Control	Analog with Digital Readout for 5 - 500 seconds
Max. PCB Size	Throat Depth = 420mm, Width = Any Size
Power	AC100v, 120v or 230v    360w    50/60Hz
Dimensions	300mm W X 310mm H X 450mm D
Weight	9Kg

## Accessories

Vacuum Pick(Tweezer)
3 Suction Pads(Cups) for Vacuum Pick(Tweezer)
5 Filters for Vacuum Pick(Tweezer)
Base Plate with 430mm x 300mm
2 for PCB Holder Small (P/#H-1)
2 for PCB Holder Large (P/#H-2)
Base Plate Stand (P/#S-1)
PCB Support Pin (P/#H-3)
Metal Frame (P/#20-10-10)

## SS-8200

### VERSATILE, COMPACT AND ERGONOMIC

This soldering iron has been designed for the user that wants a simple but versatile soldering iron without having to waste bench space for the station. Temperature control is achieved through a compact control unit located within the handle and the cord is plugged directly into the wall socket. A lightweight and ergonomically designed handpiece and a variety of standard tips make the SS-8200 one of the most versatile soldering irons on the market



SS-8200

#### FEATURES

- Temperature control built into the handpiece and no station allow for quick use on the most crowded benchtop or assembly line.
- Efficient ceramic heating element provides the heat of a station type unit without the hassle of a station.
- ESD Safe design of heating element and materials allow for work on the most sensitive printed circuit boards.
- Over 10 tips available and custom tips available upon request to match any board and component shape and size.

#### SPECIFICATIONS

- |                      |   |
|----------------------|---|
| • Heater             | Ceramic type, 200 Watt  |
| • Available Voltages | 100VAC, 120VAC or 230VAC  |
| • Power Consumption  | 80 Watts  |
| • Temperature Range  | 200-450°C   |
| • Dimensions         | 202 mm long x 20 mm diameter at grip area (does not include cord) |
| • Weight             | 40 grams (does not power cord)                                    |





## Introducing SUPER TIP

Your measures for the lead free soldering will be perfect.

- Using an internal heater you only need to change the tips.
- The temperature data below shows heating comparable to tip-heater cartridge designs.
- **The Super Tip** has been developed for the long life/low cost/lead free soldering (PAT.PEND.)



**NEW**  
**SS-8300**

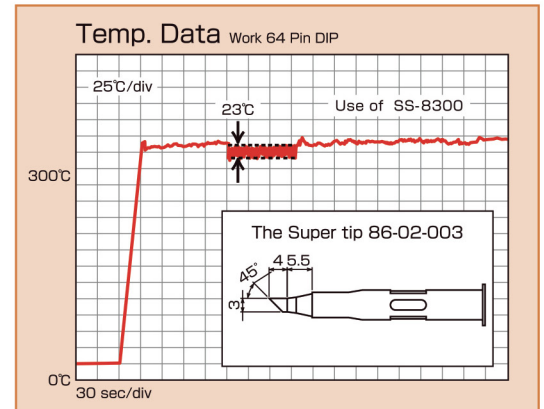
**K-5**



**Super Tip** Utilizing the special alloy, the super tip does not slow the heat transmission, but reduces the heat swelling /acid corrosion/solder intrusion of standard iron plated tips. With the effect of the newly developed heater and electric circuit of SS-8300, the Super Tip can attain tip life two times longer at low cost of conventional tips.



**ST-800C**  
Iron Stand



### Features

- Using a special alloy for the tip it actually reduces solder intrusion/acid corrosion/heat swelling, yet it has superior heat transmission.
- The tip can be replaced independently therefore lowering running costs.
- The newly developed heater of the tip inside system is excellent in the temperature start-up and the heat recovery.
- The measure against the static electricity is nearly perfect and is therefore EOS-ESD SAFE.

### Life Test

390°C,  
Lead Free Solder, 30,000 Shots



Tip After 30,000 Shots



Unused Tip

### Specifications

#### Soldering Iron

Heater : Ceramic type, 26V, Tip Inside System  
Peak 70 Watt

ESD : 5 Wire Grounded Cord and ESD Safe Plastics  
Used in the Case and Handle

Insulation Resistance : More than 100 Mohm at 400 Degrees C

Ground Resistance : Less than 2 ohm

Dimensions · Weight : 150mm long x 17mm deep, 38g

#### Control Unit

Available Voltage : AC 100, 120, or 230V

Power Consumption : Max. 75 Watt, Stabilized 10 Watt

Temperature Range : 159-499 Degrees C.

Dimensions · Weight : 94mm long x 80mm high x 69mm deep, 1.3kg

## DESOLDERING TOOL SC-7000Z

Gun Type with Versatile Function

### Designed For Lead Free

Suction capacity and hot blow system are further powered up. Removal of chip, SMD components, SMT solder residue clean up is done with more ease and more efficiency.

Dic SC-7000Z is of the pump built in structure with a temperature control circuit.

Best tool recognized all over the world.

#### POINTS

- Direct connection between the diaphragm pump and the tip can provide high vacuum efficiency which can accommodate for 8-12 layers PCB.
- The Combination of a 100W ceramic heater with sensor feedback temperature control circuit and high vacuum capacity can provide best work efficiency with no failure.
- Protection against ESD is secured.
- Quite compact, light-weight unit is portable and ready to use at any location.
- Low noise and low vibration
- The removal of SMD components can be easily done by a flick of the selector lever and by replacing the tip with the hot blow nozzle.

The patented filter cartidge will last a long life.  
Most of the removed solder and flux is accumulated as shownn the dotted line ❶ so that the filter ❷ can be kept clean for longer time.  
Dispensable with low cost.



■ Time required to reach the max vacuum



# Desoldering tools

## SC-400A SOLDER CLEANER

### Designed For Lead Free

Designed For SMT and Thru-hole Desoldering of Eutectic or Lead Free Solders.



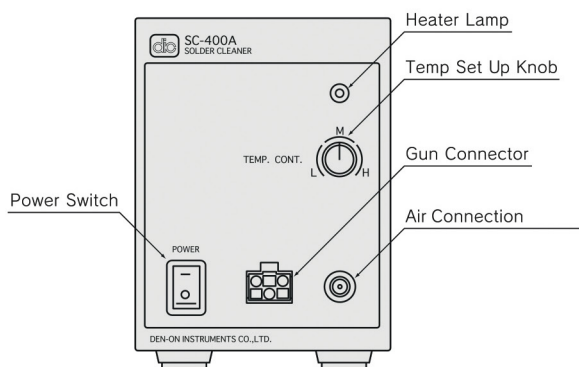
### POINTS

- powerful suction and easy clean up.
- Light Weight for ease of use fore even long periods.
- Low noise and vibration for user comfort.

# SC-400A SOLDER CLEANER

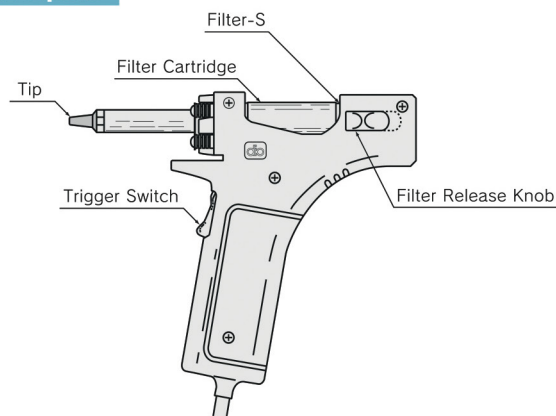
## Solder Cleaner "Designed for Lead Free"

### STATION Spec



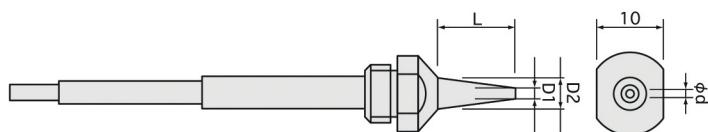
Power	AC100V · 120V · 230V 50/60Hz
Power Consumption	Max 240W Stabilized 70W (Include Gun)
Air Supply	Insert 0.3Mpa for Compressed Air or Nitrogen
Dimensions (mm.)	W100mm D170mm H136mm
Weight (g)	1600g
Cord Length	2m

### GUN Spec



Heater	Ceramic Zero-Cross Switched
Installation Resistance	100MΩ (400°C)
Vacuum Power	-62 kpa
Max Temp	480°C
Dimensions (mm.)	W190 D28 H155
Weight (g)	300g
Cord Length	1 m

### Other Tips



Specification	Marking	Ref	φ d	φ D1	φ D2	Lmm
50-01-11	0.8 Std	0.8	0.8	2.5	7.0	12.5
50-01-12	0.8 SLIM	0.8S	0.8	2.0	6.0	14.0
50-01-13	0.8 U.SLIM	S8	0.8	1.5	5.0	11.5
※ 50-01-14	1.0 Std	1.0	1.0	2.5	7.0	12.5
50-01-15	1.5 Std	1.5	1.5	3.0	7.0	12.5
50-01-16	1.0 SLIM	10S	1.0	2.0	6.0	14.0
50-01-17	1.5 SLIM	15S	1.5	2.2	6.0	14.0

※ One piece of tip 1.0mm (50-01-14) is fitted in the main body.

### OPTION

- **Filter Cartridge** (Glass Made)  
Ref (100-439)



### Combination Option for a better use

Spot Pre-heater to help fast and efficace cleaning

- **PH-400**



# Pre-heater

## PH-400 SPOT PREHEATER

### Designed For Lead Free

The PH-400 is designed specifically to assist in Soldering/desoldering small SMT devices that are mounted on high mass PCBs.

With a max intense of 360W IR Heater, the PH-400 is able to quickly heat a PCB from the bottom. In a short amount of time, the PH-400 can quickly heat up standard PCBs as well increasing through-put. With increasingly smaller devices, denser PCBs, smaller soldering iron tips and higher melt lead free solders. The PH-400 provides additional heating necessary to successfully solder/desolder in this application. Ergonomic low profile design with one spot heating allows for easy use hand soldering/desoldering applications.

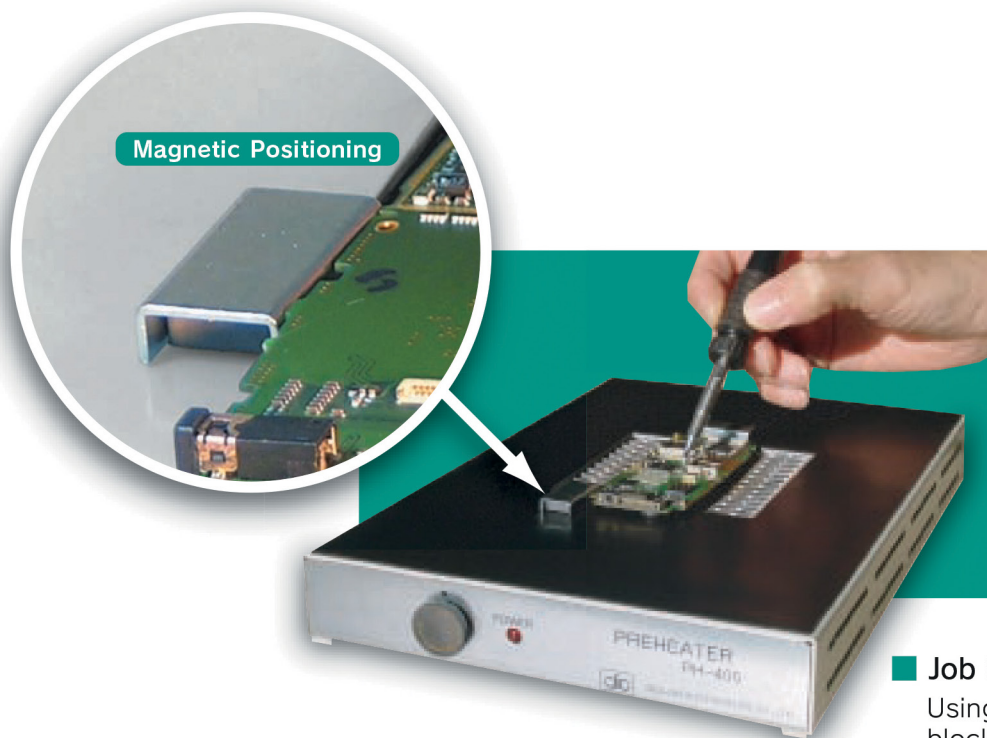


### POINTS

- Assist on fast soldering/desoldering.
- Assist on easy Underfill removal
- Combined with the Soldering iron SS-8400/8300.
- Only 38mm high comfortable operation when combined with a soldering iron.
- Magnetic positioning block.

# PH-400 SPOT PREHEATER

## Designed For Lead Free Application



### Job Circumstance

Using magnetic positioning block for an easy PCB fixture.

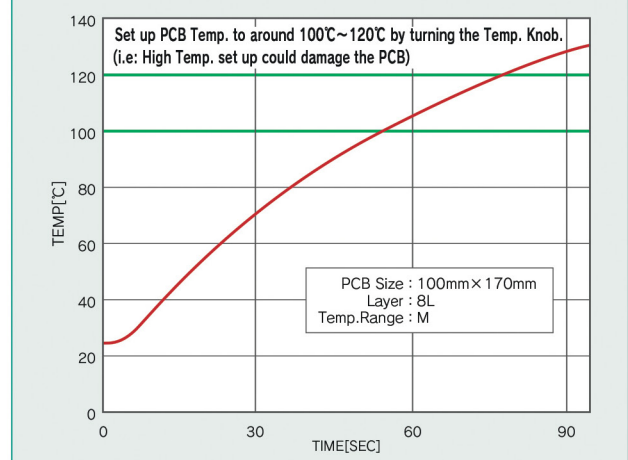
### Specification

Power	AC100V·120V·230V 50/60Hz
Heater	Max 360W Stabilized 135W
Dimension	W260mm D180mm H38mm
Weight	1.2kg

### Accessories

Magnetic Positioning Block	2PC
Rubber Sheet (ESD)	1PC

### Temp. Characteristic (On PCB)





**[www.interelectronic.com](http://www.interelectronic.com)**

1222 Budapest, Gyár St 15.  
Phone: +36 1 225-74-15  
Phone/Fax: +36 1 207-37-26  
E-mail: [info@interelectronic.com](mailto:info@interelectronic.com)