

RPS AUTOMATION



InterElectronic



INTRODUCTION



InterElectronic Hungary Ltd. offers equipments, machines and different materials (ESD) of different production technologies (SMT/THT/LED). Including high quality, special request fulfilling soldering machines, devices, tools, instruments and materials for the electronic industry and services.

SERVICES

Our each and every product has a warranty granted by the InterElectronic Hungary Ltd. For more complex appliances our company offers a well-needed training for set up and usage. We grant the repair of all of the products traded by our company during and after the warranty period. As well as we guarantee the continuous supply of accessories and instruments.

DEMONSTRATION

In case if any of our products aroused your interest the InterElectronic Hungary Ltd. would be glad to visit your company and hold a presentation of the product of your interest. As far as possible we serve you by bringing demo devices with us. In the most cases of our products we are proud possessors of references nation-wide. Major machines also could be observed at our partners' site.

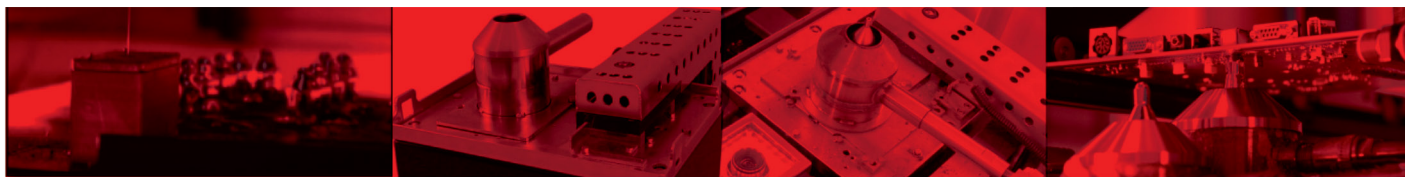
PRICE LIST

Most of the prices of our products can be requested on our website and will be sent via email to you. In case of special and more complex machines the prices are given after consultation individually through a price offer. If you are interested in more information or user manuals of our products we recommend you to visit our website (www.interelectronic.com), which is updated continuously with professional information. We also recommend you to visit our office, where you can purchase any of the needed devices and spare parts of the product of your interest.

ORDER/SHIPPING

Our soon to be partners are welcomed to be helped via telephone, fax or e-mail. We use different ways of delivery, depending on the preference of our partner. We can deliver your purchased product by ourselves, by freight or courier service. The way of delivery might be negotiated previously. We offer you cash on delivery nation-wide!

TABLE OF CONTENT



Designed for high mix, high value, and low to mid volume PCB production, the Rhythm selective machine can be programmed in minutes to handle basic to complex dig, drag, wire bond, and other through-hole soldering process. The Rhythm features best-in class servo motor motion control for speed, accuracy, and repeatability. The closed loop temperature control of N2 allows for superior thermal performance. RPS miniwave nozzles allow for wave stability and defect free performance.

RPS system represent year of engineering refinement and innovation in soldering automation to provide unrivaled performance and value. RPS selective soldering system can out-perform the soldering specifications of competitive system, yet remain competitively priced in all markets.

	Product name	Page
RPS Automation	Rhythm System	4
	Rhythm System Specifications	6
	Rhythm Selective Soldering System	7
	Rhythm SPX System	8
	Rhythm SPX System Specifications	10
	Rhythm SPX Selective Soldering System	11
	Rhythm Slide System	12
	Rhythm Slide System Specifications	14
	Rhythm Slide Selective Soldering System	15
	SPX 10 System	16
	SPX 10 System Specifications	17
	SPX 16 System	18
	SPX 16 System Specifications	20
	SPX 16 Selective Soldering System	22

Rhythm System



The Rhythm is powerful system in a small package-an excellent choice for high mix, and when properly configured, mid volume selective soldering production. The system is offered at an affordable price point to enable multi-line, multi-system deployments. The Rhythm launched in 2007 and has over 100 installations.

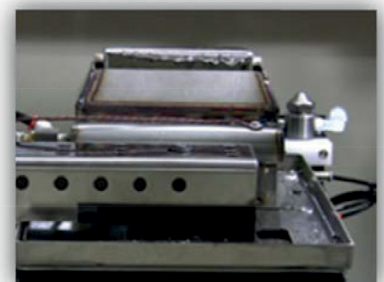
The Rhythm effectively performs precise dip soldering, drag soldering, and mini-wave selective soldering for post reflow, through-hole component and odd form soldering. The Rhythm features 100% closed-loop servo motors for XYZ axis motion to articulate the fluxer and solder miniwave beneath the thermal circuit board. RPS DirectHeat™ provides independently heated N₂ for miniwave inertion and superior thermal performance. RPS CamConductor™ off-line programming software enables intuitive and easy programming. Quick changeover for lead and lead-free solder, nozzles, and flux.

Solder range	Solder Method	Robotics	Swap Solder Pots	Active Nozzles	Nozzles
12 x 18" 18	Nozzle Motion	Closed Loop	Yes	1	RPS Gaussian MiniWave™
18 x 18" w/rotate	X-Y-Z Axis	Servo		2(current)	

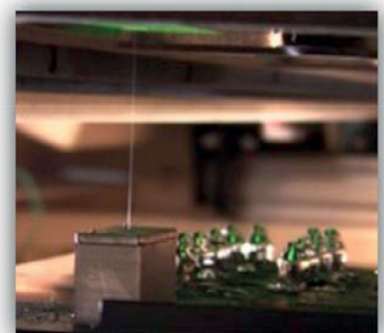
The Rhythm comes standard with a 1 year parts and labor warranty, installation, training, programming, software and a ship-away kit with consumables and spares. Solder pots are backed by a lifetime warranty.

POPULAR OPTIONS

- RPS Live View™ - live witness video system with dedicated LCD monitor for miniwave observation and demonstration.
- 4" Conventional Wave Nozzle - RPS uses best-in-class flux nozzles. A stainless steel spray flux nozzle is standard and can handle most any flux type. High precision drop jet fluxer (for high precision low solids no clean flux types) or ultrasonic fluxer (for high solids no clean flux types) are optional. Every system can be configured for dual flux nozzles and chemistries - ideal for high mix contract manufacturing.
- Inline Conveyor - 3 mm edge belt conveyor for automated load, unload via SMEMA and auto width adjustment.
- RPS Fiducial Correct™ - full fiducial inspection with pass/no pass notification and automatic X-Y position correction.
- 2nd Solder Pot - for 2nd solder alloy, easy changeover, includes 5 nozzles, solder pot, pump, and tools for contamination free processing.
- Top-Side PreHeat - For extreme thermal demands, ceramic encased IR heat top side heat.



Optional 4" Wave Nozzle



Optional Drop Jet Fluxer

Rhythm System

"This machine has really helped our business. The value is immeasurable; we see huge improvements in the speed at which we build product. Keep up the good work."

CHRIS DENNEY, Engineering Manager, Worthington Assembly

HIGH PERFORMANCE SOLDERING FROM RPS

The effectiveness of an RPS system is highlighted by its ability to handle a high mix of changing and often complex assembly requirements, including tall and odd size components, tight keep aways, thermal demands and thermal limitation. The RPS Gaussian MiniWave™ delivers precise and smooth laminar solder for tight keep aways and repeatability. RPS N2 DirectHeat™ for N2 inertion delivers closed loop N2 temperature control from 0-400°C. This innovation enables superior thermal capacity at the point of soldering, reducing, if not, eliminating component risk associated with pre-heat. These and more innovations provide RPS customers with the ability to meet ever changing requirements.

NEW FEATURES

The Rhythm does not rest on the success of the past. Several new features highlight this flexible performer:

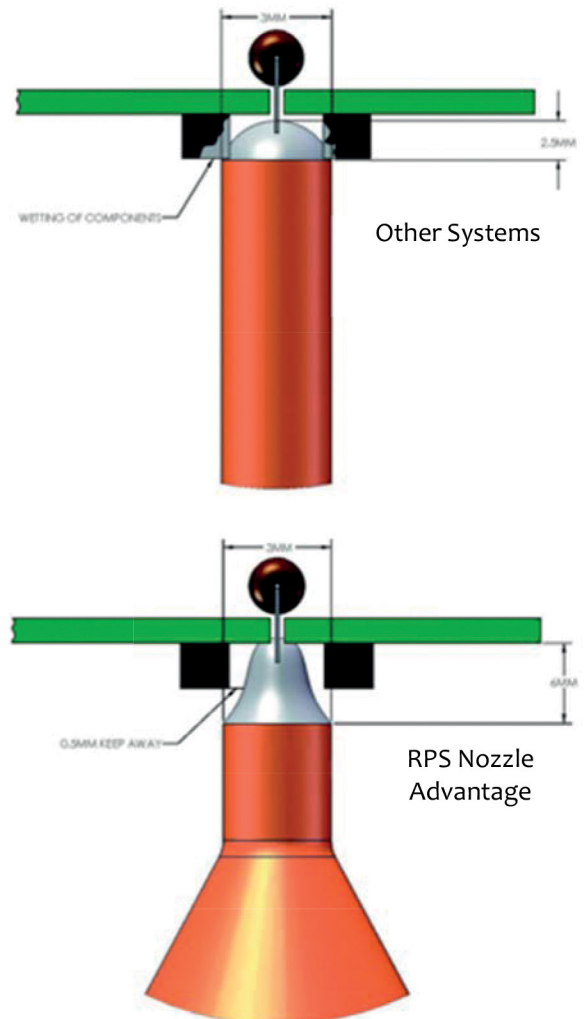
17" LCD Witness System

New Tools Storage Racks

Ultrasonic Fluxer for RMA No Clean Flux Types

Internal LED Lighting System

Fully Integrated Fiducial Vision System



SUPERIOR PRICE-TO-PERFORMANCE VALUE

Selective soldering is proven to reduce hand and wave soldering operating costs by 30-90%. But payback also requires a system that offers easy programming, low cost operation, affordable off-the-shelf parts, and durable 10+ years of operation. The Rhythm meets these requirements with ease. Moreover, with unmatched thermal control and precision, the Rhythm can process a wide range of applications, which means processing more on your RPS system and generating superior value for each dollar invested.

Industry Standard Spare Parts

Low Cost N2 Consumption| 30 CHF

High Precision Keep Away| 0.5 mm Ready

Made in the USA Support & Pricing

Excellent Thermal Capacity| 200-400°C N2 Inertion

"The versatility of RPS Selective Soldering equipment is phenomenal. Our products range from simple automotive to complex aerospace and military products. We process PCB's from .032" (0.80 mm) through .100" (2.5mm) thick with no problems, and changing to a new PCB is a breeze."

SHANNON DUFFY, Manufacturing Manager, Circle Prime

Rhythm System Specifications

CONTROL | COMPONENTS

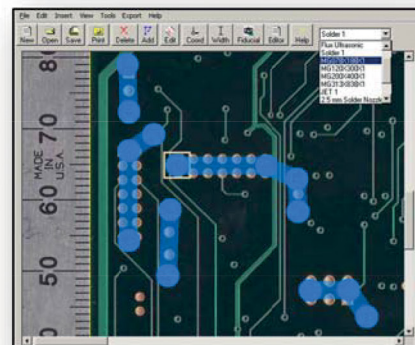
Computer controlled XYZ robotic platform using closed loop servo motion control robotics. Flux and miniwave nozzles articulate below PCB. Programs generated via RPS CamConductor programming package. Program via GUI selection relative to imported JPEG and Gerber data images. Virtually unlimited program storage. Windows 7 PC, keyboard, mouse, monitor and monitor mount, software & nozzles included. (Options denoted by *.)

OPERATION

X/Y/Z Control	Closed Loop Servo Motors
X/Y/Z Motion Accuracy	Lead Screw $\pm .002''$
Interpolated Motion	Yes Simultaneous X, Y and Z
Max Speed ^Ω	X/Y axes @ 5" per second
Max Process Range	12 x 18" 300 x 450 mm (standard config)
Min/Max PCB Size	1 x 1" to 18 x 18" 25 x 25 mm to 450 x 450 mm
Load Method	Manual Universal PCB Holder
Inline SMD Load	Option SMD Edge Belt

SOLDER PROCESS CONTROL

Approach	360° Access to All Solder Points
Nozzle Material	Wetted Alloy
Nozzle Sizes (ID)	1.5, 2, 2.5, 3, 4, 5, 8, 10, 20 mm & custom
Keep Away	1.5mm Standard 0.5mm Capable
Max Wave Height	6mm Standing Wave Height
Component Max Height	3" Top & Bottom of PCB



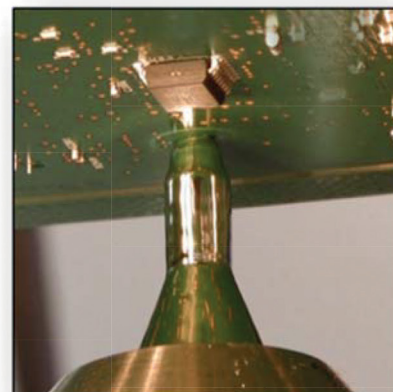
RPS CamConductor
Rapid Programming

FLUX PROCESS CONTROL

Spray Fluxer	Standard Stainless Steel
Drop Jet Fluxer*	0.5 - 2mm 14% Solids Max
Ultrasonic Fluxer*	1 - 5mm 40% Solids Max
Dual Fluxers / Chemistry*	Two Independent Nozzles & Plumbing
Flux Capacity	1 Liter Pressurized (per tank)

SOLDER POT MANAGEMENT

Solder Pot Capacity	35 lbs 16 kgs
Temp Control	PID proportioning (0-400°C) $\pm 2^\circ\text{C}$
Heat Time	60 Minutes
HMP Upgrade*	Option
Dross Production	1.5 Ounces per 8 Hours
Maintenance Cycle	80 Hour Pump Clean 30 Minutes



RPS High Precision Soldering
5mm Wave Height
0.5mm Keep Away Ready

NITROGEN MANAGEMENT

N2 Inertion	RPS DirectHeat™
N2 Temp Control	0-400 °C Closed Loop Adjustable Set Point
N2 Consumption Purity	30-35 CFH <20 PPM O ₂

KEY FEATURES & OPTIONS

- | | | |
|--|---|---|
| <ul style="list-style-type: none"> • Steel Welded Frame • N2 Temp Control • Custom Nozzles* | <ul style="list-style-type: none"> • Password Control • Industry Standard Spare Parts • Dual Flux Nozzles* | <ul style="list-style-type: none"> • Lifetime Solder Pot Warranty • Drop Jet / Ultrasonic Flux Nozzles* • High Def Witness Vision* |
|--|---|---|

REQUIREMENTS

Safety	UL and CE Compliant	Electrical	208-240 VAC 1Ø 3 Wire 50-60hz 30 amp
Dimension (D-L-H)	32 x 48 x 43" L 68" inline	Air	80 PSI Clean and Dry
Weight	1000 lbs 450 kgs	Nitrogen	N ₂ <20 PPM O ₂ 30 SCFH N ₂
Ship Weight	1250 lbs 375 kgs	Exhaust	25 SCFH (ft ³)

Rhythm Selective Soldering System

RHYTHM SELECTIVE SOLDERING SYSTEM | The Rhythm features 100% closed-loop servo XYZ axis motion control articulating the soldering miniwave and fluxer beneath the circuit board. All 3 axes can move in simultaneous coordination. The flux system is mounted to the XYZ table. Process envelope is 12 x 18" (305 x 450 mm).

RPS SYSTEM CONFIGURATION

Rhythm Selective Soldering System | 2014 Model

Closed loop servo motion control of solder pot, miniwave and fluxer below PCB. Includes Windows 7 OS, RPS MaestroLite operating software and RPS CamConductor programming software, XYZ robotics motion, Solder Management System (pot, pump, riser, nozzles, level sensor, N₂ DirectHeat inertion), Flux Management (stainless steel spray flux nozzle), manual load universal tray, set-up camera, computer, user guides and electrical schematics. Process envelope 12 x 18".

Stainless Steel Spray Flux Nozzle | High Durability Universal Flux Nozzle

RPS CamConductor™ Programming Software | Unlimited licenses and free updates.

Five (5) RPS Gaussian MiniWave Nozzles™ | select among mm sizes 2, 2.5, 3, 4, 5, 8

Life Time Solder Pot Warranty | All Solder Pots Lead Free Compatible

One Year System Warranty | All System Components, Excludes Consumables

Support | Phone, Online Support by RPS Factory Technicians. No charge during system warranty.

Installation | RPS technician performs installation over 3 days, includes labor and travel costs.

OPTIONS FOR CONSIDERATION

Auto Load | Integrated SMEMA Conveyor: High Temp Edge Belt, Auto Width Adjust

Ultrasonic Fluxer | Replaces Spray Fluxer, High Precision, High Solids Content Fluxing

Drop Jet Fluxer | Replace Standard Spray Fluxer, High Precision, 14% Solids Max.

Dual Flux | Combine Drop Jet Flux Option with Spray Flux Nozzle, includes separate plumbing, two (2) pressurized flux tanks, independent program control of each flux nozzle

RPS Fiducial Vision | Auto Correct | Detect PCB position, no pass auto stop or auto correct

RPS Live View | Witness System w/Color Camera, Dedicated 17" Monitor

2nd Solder Pot & Pump Assembly | includes 5 nozzles & cleaning toolkit

Solder Pot Warming Station | Enables 30 minute changeover

Wave Solder Nozzle | specify 2-4" width, dedicated pump, N₂ shroud, 50 CFH N₂ (no pot)

Wave Solder Nozzle/Pot Assembly | specify 2-4" width, dedicated pump, N₂ shroud, 50 CFH N₂

Integrated Top-Side IR Pre-Heater | 12" x 24", contact RPS to confirm need

Solder Management Workstation | Scissor lift and protective side panels for easy transport of solder pots

Annual Spare Parts Kit | As listed in User Guide, consumable, spare parts and tools for normal wear and maintenance over a 2,000 hour production period

Extended Warranty | Additional 12 months (for up to a full 3 years from date of install)

Large RPS Gaussian Miniwave Nozzle | select 10, 15 or 20mm ID

Additional RPS Gaussian Nozzles | select among mm sizes 2, 2.5, 3, 4, 5, 8

Rhythm SPX System



The Rhythm SPX offers the industries largest native selective soldering range of 24" by 24" (600 mm x 600mm), no manual rotation or adjustment is required to achieve this range. Based on the popular Rhythm System, the SPX offers the same 100% ultra-precise and reliable servo-driven XYZ axis motion control that articulates the solder wave and flux beneath the PCB.

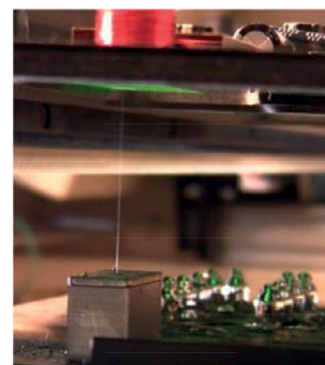
POWERFUL AUTOMATION

The SPX delivers advanced automation for system standby and start-up, automated conveyor width adjustment, dedicated witness vision system, N₂ DirectHeat™ for programmable N₂ heat of 0-400°C, and ergonomically friendly EasyLoad™ solder pot changeover. The system can be configured with spray and drop-jet flux nozzles, dual soldering nozzles, integrated pre-heat, and fiducial vision for PCB position validation and full automatic X and Y position correction. All systems include the highly regarded RPS CamConductor™ programming software for rapid offline programming using JPEG or Gerber data. (See quote for list of standard features & options.)

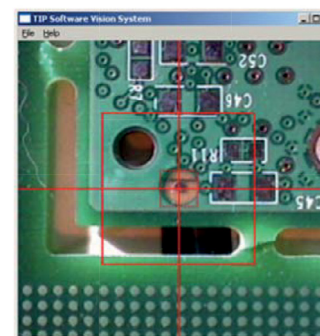
Process range	Solder Method	Robotics	Lead Free	Performance Cycle	Nozzles
24 x 24" 600 x 600 mm	Nozzle Motion X-Y-Z Axes	Closed Loop Servo	Yes	80 Hours/Pump Clean	RPS Gaussian MiniWave™

POPULAR OPTIONS

- RPS offers a wide range of optional configurations to make sure each system that leaves the factory is suited to meet a customer's specific manufacturing needs. Several popular options are listed below:
- Auto Feed Conveyor - SMEMA ready, left to right feed, single hard stop, dual optical sensors, 3 mm ultra-smooth edge belt, auto width adjust per program.
- High Performance Flux Nozzle - RPS uses belt-in-class flux nozzles. A stainless steel spray flux nozzle is standard and can handle most any flux type. High precision drop jet fluxer (for high precision low solids no clean flux types) or ultrasonic fluxer (for high solids no clean flux types) are optional. Every system can be configured for dual flux nozzles and chemistries-ideal for high mix contract manufacturing.
- RPS Live View™ - the RPS Live View video system features a dedicated LCD monitor for miniwave observation.
- RPS Fiducial Correct™ - exclusively designed by and for RPS selective soldering, featuring high-def fiducial detection and auto correction that is easy to use and affordable.



Optional Drop Jet Fluxer (front) & Custom Multi-Up Solder Nozzle (rear)



Fiducial Correct Vision System

Rhythm SPX System

PreHeat— RPS innovation has reduced the need for pre-heat in most applications. For challenging applications, RPS IR preheat can be integrated to provide a gentle boost to the soldering process.

"This machine has really helped our business. The value is immeasurable; we see huge improvements in the speed at which we build product. Keep up the good work."

CHRIS DENNEY, Engineering Manager, Worthington Assembly

HIGH PERFORMANCE SOLDERING FROM RPS

The effectiveness of an RPS system is highlighted by its ability to handle a high mix of changing and often complex assembly requirements, including tall and odd size components, tight keep aways, thermal demands and thermal limitation. The RPS Gaussian MiniWave™ delivers precise and smooth laminar solder for tight keep aways and repeatability. RPS N2 DirectHeat™ for N2 inertion delivers closed loop N2 temperature control from 0-400°C. This innovation enables superior thermal capacity at the point of soldering, reducing if not eliminating component risk associated with pre-heat. These and more innovations provide RPS customers with the ability to meet ever changing assembly requirements.

NEW FEATURES

The Rhythm SPX does not rest on the success of the past. Several new features highlight this flexible performer:

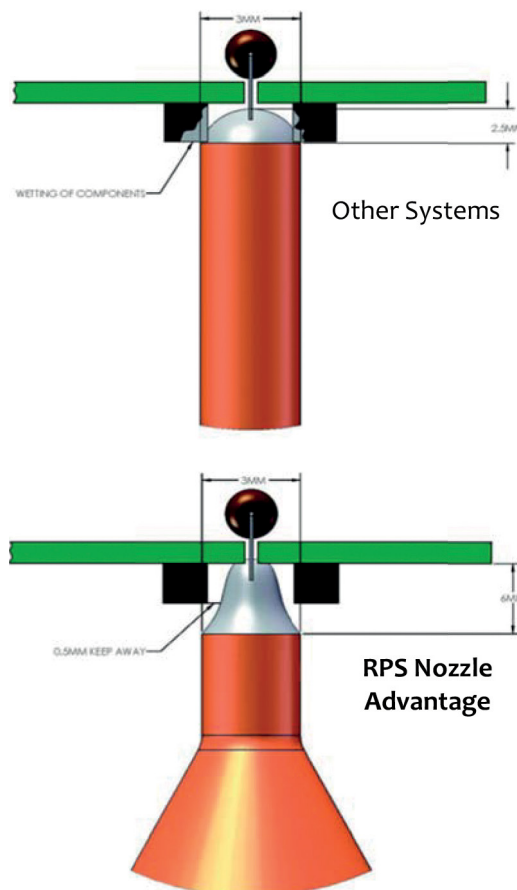
17" LCD Witness System

New Tools Storage Racks

Ultrasonic Fluxer for RMA No Clean Flux Types

Internal LED Lighting System

Fully Integrated Fiducial Vision System



SUPERIOR PRICE-TO-PERFORMANCE VALUE

Selective soldering is proven to reduce hand and wave soldering operating costs by 30-90%. But payback also requires a system that offers easy programming, low cost operation, affordable off-the-shelf parts, and durable 10+ years of operation. The Rhythm SPX meets these requirements with ease. Moreover, with a 24 x 24" process range and unmatched thermal control and performance, the Rhythm SPX can process a wide range of applications, which means an unrivaled price-to-performance value.

Industry Standard Spare Parts

Low Cost N2 Consumption| 30 CHF

High Precision Keep Away| 0.5 mm Ready

Made in the USA Support & Pricing

Excellent Thermal Capacity| 200-400°C N2 Inertion

"The versatility of RPS Selective Soldering equipment is phenomenal. Our products range from simple automotive to complex aerospace and military products. We process PCB's from .032" (0.80 mm) through .100" (2.5mm) thick with no problems, and changing to a new PCB is a breeze."

SHANNON DUFFY, Manufacturing Manager, Circle Prime

Rhythm SPX System Specifications

CONTROL | COMPONENTS

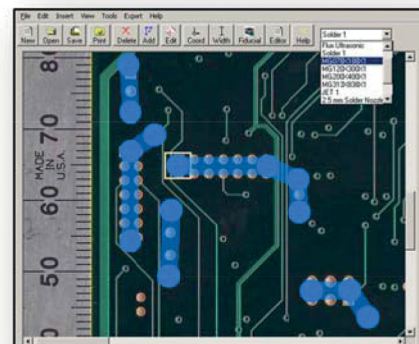
Computer controlled XYZ robotic platform using closed loop servo motion control robotics. Flux and miniwave nozzles articulate below PCB. Programs generated via RPS CamConductor programming package. Program via GUI selection relative to imported JPEG and Gerber data images. Virtually unlimited program storage. PC, keyboard, mouse, monitor and monitor mount, installation, software & nozzles included. (Options denoted by *.)

OPERATION

X/Y/Z Control	Closed Loop Servo Motors
X/Y/Z Motion Accuracy	Lead Screw $\pm .002''$
Interpolated Motion	Yes Simultaneous X, Y and Z
Max Speed ^Ω	X/Y axes @ 5" per second
Max Process Range	24 x 24" 605 x 605 mm
Min/Max PCB Size	1 x 1" to 24 x 24"
Load Method	Manual Universal PCB Holder
Inline SMEMA Load	Option SMEMA Edge Belt

SOLDER PROCESS CONTROL

Approach	360° Access to All Solder Points
Nozzle Material	Wetted Alloy
Nozzle Sizes (ID)	1.5, 2, 2.5, 3, 4, 5, 8, 10, 20 mm & custom
Keep Away	1.5mm Standard 0.5mm Capable
Max Wave Height	6mm Standing Wave Height
Component Max Height	3" Top & Bottom of PCB



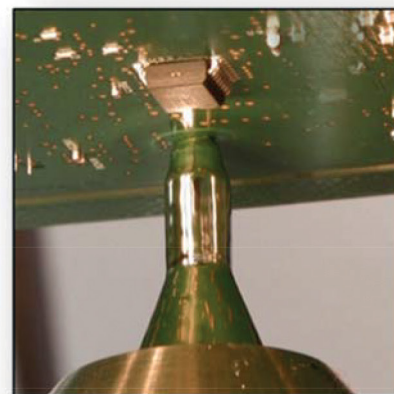
RPS CamConductor
Rapid Programming

FLUX PROCESS CONTROL

Spray Fluxer Stainless Steel	Standard 6.5 – 25mm 40% Solids Max
Drop Jet Fluxer*	0.5 - 2mm 14% Solids Max
Ultrasonic Fluxer*	1.5 - 15mm Unlimited Flux Types
Dual Fluxers / Chemistry*	Two Independent Nozzles & Plumbing
Flux Capacity	1 Liter Pressurized (per tank)

SOLDER POT MANAGEMENT

Solder Pot Capacity	35 lbs 16 kgs
Temp Control	PID proportioning (0-400°C) $\pm 2^\circ\text{C}$
HMP Upgrade*	Option
Heat Time	60 Minutes
Dross Production	1.5 Ounces per 8 Hours
Maintenance Cycle	80 Hour Pump Clean 30 Minutes



RPS High Precision Soldering
5mm Wave Height
0.5mm Keep Away Ready

NITROGEN MANAGEMENT

N2 Inertion	RPS DirectHeat™
N2 Temp Control	0-400 °C Closed Loop Adjustable Set Point
N2 Consumption Purity	30-35 CFH <20 PPM O ₂

KEY FEATURES & OPTIONS

- | | | |
|--|---|---|
| <ul style="list-style-type: none"> • Steel Welded Frame • N2 Temp Control • Custom Nozzles* | <ul style="list-style-type: none"> • Password Control • Industry Standard Spare Parts • Dual Flux Nozzles* | <ul style="list-style-type: none"> • Lifetime Solder Pot Warranty • Drop Jet / Ultrasonic Flux Nozzles* • High Def Witness Vision* |
|--|---|---|

REQUIREMENTS

Safety	UL and CE Compliant	Electrical	208-240 VAC 1Ø 3 Wire 50-60hz 40 amp
Dimensions	64 x 63 x 49"	Air & N2	80 PSI N ₂ <20 PPM O ₂ 30 CFH N ₂
(D x L x H)	64 x 70 x 49" (inline)	Exhaust	25 SCFH
Weight	900 lbs 425 kgs	Freight	78 x 78 x 67" 1100 lbs 500 kgs

[†]Specifications subject to change. RPS not responsible for typographical errors. ^ΩProcess speeds dictated by safety and process requirements.

Rhythm SPX Selective Soldering System

RHYTHM SPX SELECTIVE SOLDERING SYSTEM | The Rhythm SPX features 100% closed-loop servo XYZ axis motion control articulating the soldering miniwave and fluxer beneath the circuit board. All 3 axes can move in simultaneous coordination. The flux system is mounted to the XYZ table. Process envelope is 24 x 24" (605 x 605mm).

RPS SYSTEM CONFIGURATION

Rhythm SPX Selective Soldering System | 2014 Model

Handles 24" x 24" PCB's utilizing closed loop servo motion of solder pot, miniwave and fluxer. Includes operating software and RPS CamConductor Programming software, XYZ robotics motion, Solder Management System (pot, pump, riser, nozzles, level sensor, N2 DirectHeat inertion), Flux Management, manual load universal tray, set-up camera, computer, monitor, installation, training, documentation, software upgrades & support.

Stainless Steel Spray Flux Nozzle | High Durability Universal Flux Nozzle

RPS CamConductor™ Programming Software | Unlimited licenses and free updates.

Five (5) RPS Gaussian MiniWave Nozzles™ | select among mm sizes 2, 2.5, 3, 4, 5, 8

Life Time Solder Pot Warranty | All Solder Pots Lead Free Compatible

One Year System Warranty | All System Components, Excludes Consumables

Support | Phone, Online Support by RPS Factory Technicians. No charge during system warranty.

OPTIONS FOR CONSIDERATION

Ultrasonic Fluxer | Replaces Spray Fluxer, High Precision, High Solids Content Fluxing

Drop Jet Fluxer | Replace Standard Spray Fluxer, High Precision, 14% Solids Max.

Dual Flux | Combine Drop Jet with Spray Flux Nozzle, includes separate plumbing, two (2) pressurized flux tanks, independent program control of each flux nozzle

RPS Fiducial Vision | Auto Correct | detect correct PCB position, pass / no pass, auto correct

RPS Live View | Witness System w/Color Camera, Dedicated 17" Monitor

2nd Solder Pot & Pump Assembly | includes 5 nozzles & cleaning toolkit

Solder Pot Warming Station | enables 30 minute changeover

Wave Solder Nozzle | specify 2-4" width, dedicated pump, N2 shroud, 50 CFH N2 (no pot)

Wave Solder Nozzle/Pot Assembly | specify 2-4" width, dedicated pump, N2 shroud, 50 CFH N2

Auto Load | Integrated SMEMA Conveyor | High Temp Edge Belt, Auto Width Adjust

Integrated Top-Side IR Pre-Heater | 24" x 24". Contact RPS to confirm need.

Solder Management Workstation | Scissor lift and protective side panels for easy transport of solder pots

Annual Spare Parts Kit | As listed in User Guide. Consumable, spare parts and tools for normal wear and maintenance over a 2,000 hour production period.

Extended Warranty | Additional 12 months (up to a full 3 years from date of install)

Large RPS Gaussian Miniwave Nozzle | select 10, 15 or 20mm ID

Additional RPS Gaussian Nozzles | select among mm sizes 2, 2.5, 3, 4, 5, 8

Rhythm Slide System

Based on the popular Rhythm System, the Rhythm Slide is an affordable high performance miniwave selective soldering system for through hole soldering. With a process range of 12 x 12", the system performs precise dip, drag and dip soldering using an RPS miniwave and a high durability EFD flux nozzle; both nozzles articulate below the PCB. A second solder pot can be hot-swapped for lead and lead-free processing.

INNOVATION IN MOTION

The Rhythm Slide delivers innovative simplicity. The Z axis is separate from the X and Y linear stages, and independently raises and lowers the PCB. This eliminates the need to lift a heavy solder pot to the PCB. Free from the burden of a heavy solder pot, the X & Y axes can utilize a high performance ball drive system for superior motion precision and reliability.

POWERFUL AUTOMATION

The Rhythm Slide features the best motion control technology in the compact system class: ultra-precise servo motors combined with stainless steel ball screw linear drives.



Rhythm Slide
Selective Soldering System

Solder Area	Process Method	XY Motion	Lead Free	Flux Station	Miniwave Performance	Load Method
12 x 12" 300 x 300 mm	Miniwave Motion	Direct Drive Ball Screw	Yes	Stainless Steel EFD	6 mm Height 1.5 mm Keep Away	Manual

The Rhythm Slide **includes everything needed to be in production on day one**. Five (5) miniwave nozzles, spray flux nozzle, solder pot, computer, software, spares, tool kit and installation are included. Advanced features and options include hi res witness vision system, N2 DirectHeat™ to control N2 inertion temperature, and ergonomically friendly EasyLoad™ solder pot access.

PROVEN PAY BACK

Selective soldering is proven to reduce hand and wave soldering operating costs by 30-90%. But payback also requires a system that offers easy programming, low cost operation, affordable off-the-shelf parts, and durable 10+ years of operation. The Rhythm Slide meets these requirements with ease:

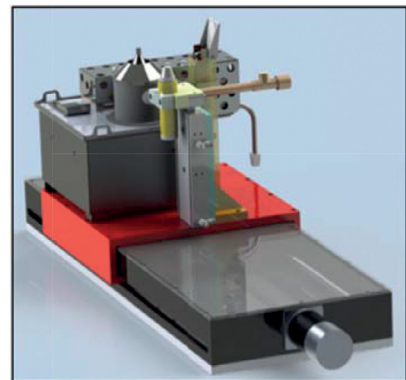
Low Cost | Industry Standard Spare Parts

Low Cost N2 Consumption | 30 CHF |

Low Cost Dross Production | 1.5 Ounces/Shift

Highest Precision Keep Away | 0.5 mm Ready

Made in the USA Support & Pricing



Selective Soldering Pot, MiniWave and
Fluxer Mounted to Protected Linear Stage

Rhythm Slide System

HIGH PERFORMANCE SOLDERING

The effectiveness of an RPS system is highlighted by its ability to handle a high mix of changing and often complex assembly requirements, including tall and odd size components, tight keep aways, thermal demands and thermal limitation. The RPS Gaussian MiniWave™ delivers precise and smooth laminar solder for tight keep ways and repeatability. RPS N2 DirectHeat™ for N2 inertion delivers closed loop N2 temperature control from 0-400°C. This innovation enables superior thermal capacity at the point of soldering, reducing if not eliminating component risk associated with pre-heat. These and more innovations provide RPS customers with the ability to meet ever changing assembly requirements.

NEW FEATURES

The Rhythm Slide does not rest on the success of the past. Several new features highlight this compact performer:

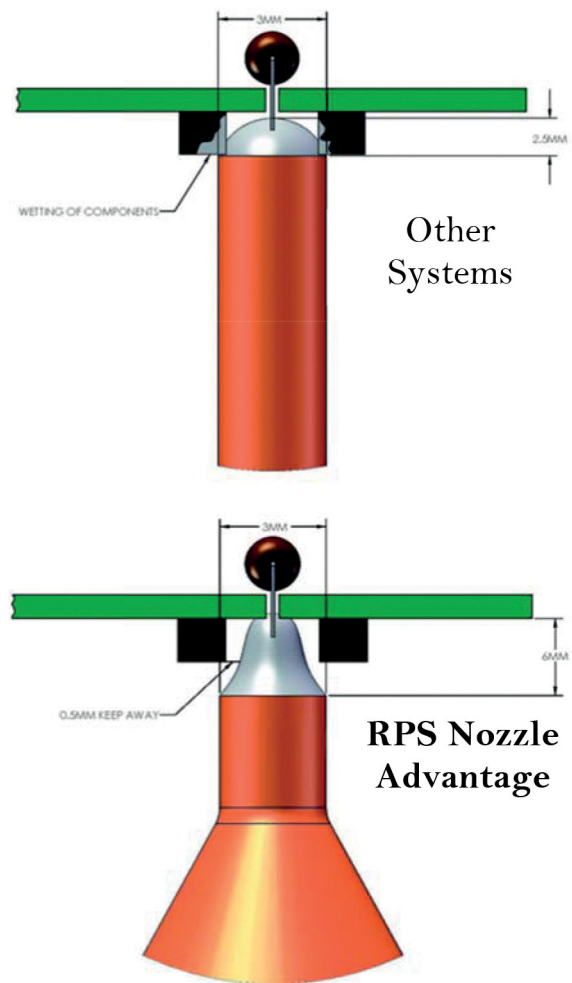
Direct Drive Ball Screw for X & Y Motion

New Tool Storage Front and Back

3-Way High Visibility Hood System

Internal LED Lighting System

New Light Weight Solder Pot



ESSENTIAL OPTIONS & FEATURES

The Rhythm Slide's standard features and optional configurations meet essential manufacturing needs.

- **EasyChange™ Solder Pot Access**— the system automatically indexes the solder pot to an access position for easy maintenance and pot changeover. A full-access hood further eases maintenance.
- **CamConductor™ Programming**— the popular RPS CamConductor programming software for rapid offline programming using JPEG or Gerber. Unlimited seats.
- **RPS Live View™**— the RPS Live View video system features a high definition camera, adjustable zoom and a dedicated LCD monitor for miniwave observation.
- **High Performance Flux Nozzles**— RPS uses best-in-class flux nozzles. A stainless steel EFD® spray flux nozzle is standard and can handle most any flux type. High precision REA® drop jet fluxer (for high precision low solids no clean flux types) or Sonotek ultrasonic fluxer (for high solids no clean flux types) are optional. Every system can be configured for dual flux nozzles and chemistries— ideal for high mix contract manufacturing.

"The versatility of RPS Selective Soldering equipment is phenomenal. Our products range from simple automotive to complex aerospace and military products. We process PCB's from .032" (0.80 mm) through .100" (2.5mm) thick with no problems, and changing to a new PCB is a breeze." **SHANNON DUFFY**, Manufacturing Manager, Circle Prime

Rhythm Slide Specifications

CONTROL | COMPONENTS

Computer controlled XYZ robotic platform using closed loop servo motion control robotics. Flux and miniwave nozzles articulate below PCB. Programs generated via RPS CamConductor programming package. Program via GUI selection relative to imported JPEG and Gerber data images. Unlimited program storage. Windows 7 PC, keyboard, mouse, monitor and monitor mount, software & nozzles included. (Options denoted by *.)

OPERATION

X/Y/Z Motion Control	Closed Loop Servo Motors
Motion Type	X/Y Stainless Steel Ball Screw Z Lead Screw
Accuracy	± .002"
Max Speed ^Ω	X/Y axes 18" per second Z axis 7" per second
Interpolated Motion	Yes Simultaneous X, Y and Z
Max Process Range	12 x 12" 305 x 305 mm
Min/Max PCB Size	1 x 1" to 14 x 14" 25 x 25 mm to 356 x 356 mm
Load Method	Manual Universal PCB Holder

SOLDER PROCESS CONTROL

Approach	360° Unlimited Access to All Solder Points
Nozzle Material	Wetted Chromium Alloy
Nozzle Sizes (ID)	1.5, 2, 2.5, 3, 4, 5, 8, 10, 20 mm & custom
Keep Away	1.5mm Standard 0.5mm Capable
Max Wave Height	6mm Standing Wave Height
Component Max Height	3" Top & Bottom of PCB

FLUX PROCESS CONTROL

Spray Fluxer	Standard Stainless Steel 4 – 25mm (EFD™)
Drop Jet Fluxer*	0.5 - 2mm 14% Solids Max (REA™)
Ultrasonic Fluxer*	1 - 5mm 40% Solids Max (Sonotek™)
Dual Fluxers / Chemistry*	Two Independent Nozzles & Plumbing
Flux Capacity	1 Liter Pressurized (per tank)

SOLDER POT MANAGEMENT

Solder Pot Capacity	30 lbs 13.5 kgs
Temp Control	PID proportioning (0-400°C) ± 2°C
Heat Time	40 Minutes
HMP Upgrade	Option
Dross Production	1.5 Ounces per 8 Hours
Maintenance Cycle	80 Hour Pump Clean 30 Minutes

NITROGEN MANAGEMENT

N2 Inertion	RPS DirectHeat™
N2 Temp Control	0-400 °C Closed Loop Set Point
Consumption Purity	30 CFH @ <20 PPM O ₂

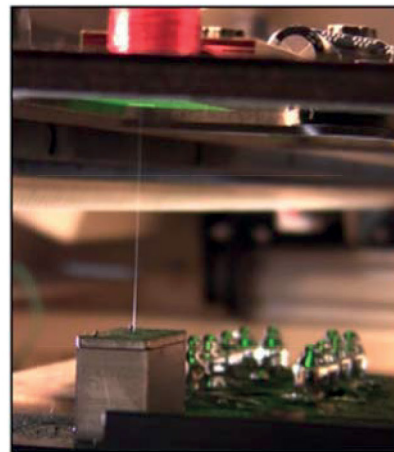
KEY FEATURES & OPTIONS

- | | | |
|---|---|---|
| <ul style="list-style-type: none"> • Steel Welded Frame • Single Hood Assembly • Custom Nozzles* | <ul style="list-style-type: none"> • Admin Access Control • Non Proprietary Spare Parts • Dual Flux Nozzles* | <ul style="list-style-type: none"> • Lifetime Solder Pot Warranty • Drop Jet / Ultrasonic Flux Nozzles* • High Def Witness Vision* |
|---|---|---|

REQUIREMENTS

Safety	UL and CE Compliant	Electrical	208-240 VAC 1Ø 3 Wire 50-60hz 30 amp
Dimensions	38 x 44 x 40" (D x L x H)	Air	80 PSI
Weight	500 lbs	Nitrogen	N ₂ <20 PPM O ₂ 30 SCFH N ₂
Ship Weight	650 lbs	Exhaust	25 SCFH (ft ³)

[†] Subject to change without notice. RPS not responsible for typographical errors. ^Ω Process speeds dictated by safety and process requirements.



Optional Drop Jet Fluxer



RPS High Precision Soldering
5mm Wave Height | 0.5mm Keep Away Ready

Rhythm Slide Selective Soldering System

RHYTHM SLIDE SELECTIVE SOLDERING SYSTEM | The Rhythm Slide features closed loop servo XYZ axis motion control. Direct drive ball screws on the X/Y axes articulate the soldering miniwave beneath the circuit board. The Z axis is independent and controls vertical motion. All 3 axes can move in simultaneous coordination. The flux system is mounted to the XY table. Process envelope is 12 x 12" (305 x 305 mm).

RPS SYSTEM CONFIGURATION

Rhythm SLIDE Selective Soldering System | 2014 Model

Closed loop servo motion control of solder pot, miniwave and fluxer below PCB. Includes Windows 7 OS, RPS MaestroLite operating software and RPS CamConductor programming software, XYZ robotics motion, Solder Management System (pot, pump, riser, nozzles, level sensor, N2 DirectHeat inertion), Flux Management, manual load universal tray, set-up camera, computer, user guides and electrical schematics. Process envelope 12 x 12".

Stainless Steel Spray Flux Nozzle | High Durability Universal Flux Nozzle

RPS CamConductor™ Programming Software | Unlimited licenses and free updates.

Five (5) RPS Gaussian MiniWave Nozzles™ (select among mm sizes 2, 2.5, 3, 4, 5, 8)

Life Time Solder Pot Warranty | All Solder Pots Lead Free Compatible

One Year System Warranty | All System Components, Excludes Consumables

Support | Phone, Online Support by RPS Factory Technicians. No charge during system warranty.

Installation | RPS technician performs installation over 3 days, includes labor and travel costs.

OPTIONS FOR CONSIDERATION

Sonotek® Ultrasonic Fluxer | Replaces Spray Fluxer, High Precision, High Solids Content Fluxing

REA® Drop Jet Fluxer | Replaces Spray Fluxer, High Precision, 14% Solids Max

Dual Flux | Combine Drop Jet with EFD Spray Flux Nozzle, includes separate plumbing, two (2) pressurized flux tanks, independent program control of each flux nozzle.

RPS Fiducial Vision | Auto Correct | Detect PCB position, no pass auto stop or auto correct

RPS Live View | HD Witness System w/Color Camera, Dedicated 17" HD Monitor

2nd Solder Pot & Pump Assembly | includes 5 nozzles & toolkit

Solder Pot Warming Station | Enables 30 minute changeover

Wave Solder Nozzle | specify 2-4" width, dedicated pump, N2 shroud, 50 CFH N2

Annual Spare Parts Kit | As listed in User Guide, consumable, spare parts and tools for normal wear and maintenance over a 2,000 hour production period

Extended Warranty | Additional 12 months (for up to 3 full years from date of install), see terms for details

Large RPS Gaussian Miniwave Nozzle | select 10, 15 or 20mm ID

Additional RPS Gaussian Nozzles | select among mm sizes 2, 2.5, 3, 4, 5, 8

FRX 10 System

Introduced in Summer 2014 as an addition to the budget-friendly RPS FRX Economy Line, the FRX10 is an excellent choice for high mix selective soldering production, designed specifically for prototyping and low volume production needs. The machine has a standard process range of 10x10" (254 x 254 mm), and performs precise drag and dip soldering using the RPS Gaussian Miniwave™ and RPS's proprietary DirectHeat™ nitrogen inertion system. The FRX10 is fully equipped with a batch load configuration, spray flux, and can be configured for lead or lead-free processing.

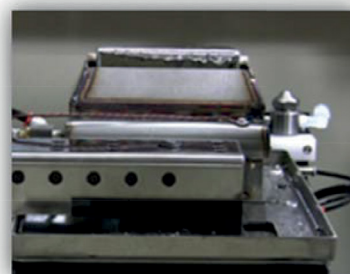


Solder Range	Solder Method	Robotics	Swap Solder Pots	Active Nozzles	Miniwave Performance
10 x 10"	Nozzle Motion X-Y-Z Axis	Stepper	Yes	1	RPS Gaussian Mini-Wave™

The FRX10 comes standard with a 1 year parts and labor warranty, programming software and a ship-away kit. Solder pots are backed by a lifetime warranty.

POPULAR OPTIONS

- RPS Live View™— live HD witness video system with dedicated LCD monitor for miniwave observation and demonstration.
- 4" Conventional Wave Nozzle— creates a "wave capable" selective soldering system, custom width up to 4"
- High Performance Flux Nozzles— RPS uses best-in-class flux nozzles. A spray flux nozzle is standard and can handle most any flux type. High precision drop jet fluxer (for high precision low solids no clean flux types) or ultrasonic fluxer (for high solids no clean flux types) are optional. Every system can be configured for dual flux nozzles and chemistries— ideal for high mix contract manufacturing.
- RPS Fiducial Correct™— full fiducial inspection with pass/no pass notification and automatic X-Y position correction.
- 2nd Solder Pot— for 2nd solder alloy, easy changeover, includes 2 nozzles, solder pot, pump, & tools for contamination free processing.



Optional 4" Wave Nozzle

HIGH PERFORMANCE SOLDERING FROM RPS

The effectiveness of an RPS system is highlighted by its ability to handle a high mix and often complex assembly requirements, including tall and odd size components, tight keep aways, thermal demands and thermal limitation. The RPS Gaussian MiniWave™ delivers precise and smooth laminar solder flow for tight keep ways and repeatability. RPS N2 DirectHeat™ for N2 inertion delivers closed loop N2 temperature control from 0-400°C. This innovation enables superior thermal capacity at the point of soldering, reducing if not eliminating component risk associated with pre-heat. These and more innovations provide RPS customers with the ability to meet ever changing requirements.

FRX 10 System

SUPERIOR PRICE-TO-PERFORMANCE VALUE

Industry Standard Spare Parts

Precision Keep Away | 1.5 mm Standard

Low N2 Consumption | 40 CFH

Low Dross Production | 1.5 Ounces/Shift

Excellent Thermal Capacity | 200 - 400°C N2 Inertion

Selective soldering is proven to reduce hand and wave soldering operating costs by 30-90%. But payback also requires a system that offers easy programming, low cost operation, affordable off-the-shelf parts, and durable operation. Moreover, with unmatched thermal control and precision, the FRX10 can process a wide range of applications, which means processing more on your RPS system and generating superior value for each dollar invested.

FRX 10 System Specifications

CONTROL | COMPONENTS

Computer controlled XYZ robotic platform using stepper based motion control robotics. Flux and miniwave nozzles articulate below PCB. Programs generated via RPS CamConductor programming package. Program via GUI selection relative to imported JPEG and Gerber data images. Virtually unlimited program storage, Windows 7 PC, keyboard, mouse, monitor and monitor mount, software & nozzles included. (Options denoted by *.)

OPERATION

X/Y/Z Control	Stepper Motors
Interpolated Motion	Simultaneous X,Y and Z
Max Speed Ω	X/Y axes @ 5" per second
Max Process Range	10 x 10" 254 x 254 mm
Computer & Monitor	Windows 7 PC Offline RPS CamConduction™ Programming

SOLDER PROCESS CONTROL

Load Method	Manual Universal PCB Holder
Approach	360° unlimited Access to All Solder Points
Nozzle Material	Wetted Chromium Alloy
Nozzle Sizes (ID)	(ID) 1.5, 2, 2.5, 3, 4, 5, 8, 10, 20 mm & custom
Keep Away	1.5 mm Standard
Max Wave Height	6 mm Standing Wave Height
Component Max Height	3" Top & Bottom of PCB

FLUX PROCESS CONTROL

Spray Fluxer	6-20 mm No Limitation
Drop Jet Fluxer	0.5 - 2 mm 14% Solids Max
Dual Fluxers/ Chemistry	Not Available
Flux Capacity	1 Liter Pressurized (per tank)

SOLDER POT MANAGEMENT

Solder Pot Capacity	30 lbs 16 kgs
Temp Control	PID proportioning (0-400°C)
Heat Time	75 Minutes
Dross Production	1.5 Ounces per 8 Hour
Maintenance Cycle	80 Hour Pump Clean 30 Minutes

NITROGEN MANAGEMENT

N2 Inertion	RPS DirectHeat™
N2 Temp Control	0-400°C Closed Loop Set Point
N2 Consumption Purity	40 CFH <20 PPM O2H

KEY FEATURES & OPTIONS

Steel Welded Frame	Industry Standard Spare Parts
Custom Nozzles	Lifetime Solder Pot Warranty
N2 Temp Control	Drop Jet / Ultrasonic Flux Nozzles

REQUIREMENTS

Safety	UL and CE Compliant
Dimension (D-L-H)	48 x 48 x 47"
Weight	850 lbs 450 kgs
Ship Weight	1000 lbs 375 kgs
Electrical	208-240 VAC 1Ø 3 Wire 50-60 hz 30 amp
AIR	80 PSI Clean and Dry
Nitrogen	N2 < 20 PPM O2 SCFH N2
Exhaust	25 SCFH (ft3)

FRX 16 System

The FRX16 is powerful system in a small package— an excellent choice for high mix selective soldering production. The system is offered at an affordable price point to enable multi-line, multi-system deployments.

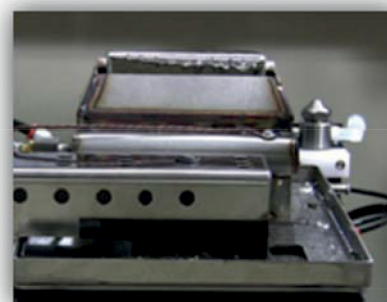
The FRX16 effectively performs precise dip soldering, drag soldering, and mini-wave selective soldering for post reflow, through-hole component and odd form soldering. The FRX16 features stepper motors for XYZ axis motion to articulate the fluxer and solder miniwave beneath the circuit board. RPS DirectHeat™ provides independently heated N2 for miniwave inertion and superior thermal performance. RPS CamConductor™ off-line programming software enables intuitive and easy programming. Quick changeover for lead and lead-free solder, nozzles, and flux.



Solder Range	Process Method	Robotics	Swap Solder Pots	Active Nozzles	Nozzles
16 x 16"	Nozzle Motion X-Y-Z Axis	Stepper	Yes	1	RPS Gaussian Mni-Wave™

POPULAR OPTIONS

- **RPS Live View™**— live HD witness video system with dedicated LCD monitor for miniwave observation and demonstration.
- **4" Conventional Wave Nozzle**— creates a “wave capable” selective soldering system, custom width up to 4”
- **High Performance Flux Nozzles**— RPS uses best-in-class flux nozzles. A spray flux nozzle is standard and can handle most any flux type. High precision drop jet fluxer (for high precision low solids no clean flux types) or ultrasonic fluxer (for high solids no clean flux types) are optional. Every system can be configured for dual flux nozzles and chemistries— ideal for high mix contract manufacturing.
- **RPS Fiducial Correct™**— full fiducial inspection with pass/no pass notification and automatic X-Y position correction.
- **2nd Solder Pot**— for 2nd solder alloy, easy changeover, includes 2 nozzles, solder pot, pump, & tools for contamination free processing.
- **Top-Side PreHeat**— For extreme thermal demands, ceramic encased IR heat top side heat.



Optional 4" Wave Nozzle



Optional Drop Jet Fluxer

“This machine has really helped our business. The value is immeasurable; we see huge improvements in the speed at which we build product. Keep up the good work.”

CHRIS DENNEY, Engineering Manager, Worthington Assembly

FRX 16 System

HIGH PERFORMANCE SOLDERING FROM RPS

The effectiveness of an RPS system is highlighted by its ability to handle a high mix and often complex assembly requirements, including tall and odd size components, tight keep aways, thermal demands and thermal limitation. The RPS Gaussian MiniWave™ delivers precise and smooth laminar solder flow for tight keep ways and repeatability. RPS N2 DirectHeat™ for N2 inertion delivers closed loop N2 temperature control from 0-400°C. This innovation enables superior thermal capacity at the point of soldering, reducing if not eliminating component risk associated with pre-heat. These and more innovations provide RPS customers with the ability to meet ever changing requirements.

SUPERIOR PRICE-TO-PERFORMANCE VALUE

Selective soldering is proven to reduce hand and wave soldering operating costs by 30-90%. But payback also requires a system that offers easy programming, low cost operation, affordable off-the-shelf parts, and durable operation. Moreover, with unmatched thermal control and precision, the FRX16 can process a wide range of applications, which means processing more on your RPS system and generating superior value for each dollar invested.

Industry Standard Spare Parts

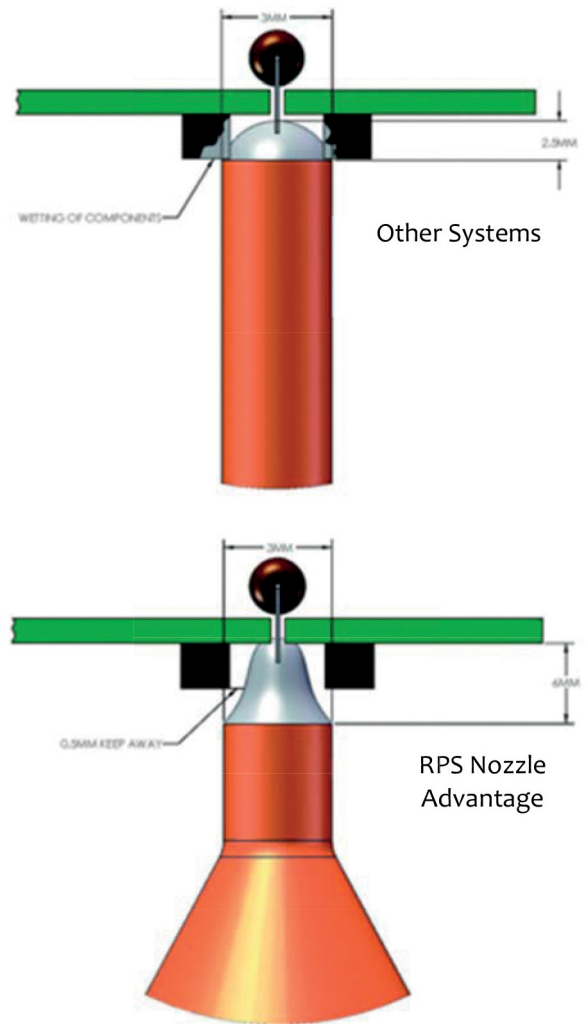
Low N2 Consumption | 30 CFH

Low Dross Production | 1.5 Ounces/Shift

Precision Keep Away | 1.5 mm Standard

Made in the USA

Excellent Thermal Capacity | 200 - 400 °C N2 Inertion



"The versatility of RPS Selective Soldering equipment is phenomenal. Our products range from simple automotive to complex aerospace and military products. We process PCB's from .032" (0.80 mm) through .100" (2.5mm) thick with no problems, and changing to a new PCB is a breeze."

SHANNON DUFFY, Manufacturing Manager, Circle Prime

FRX 16 System Specification

CONTROL | COMPONENTS

Computer controlled XYZ robotic platform using stepper based motion control robotics. Flux and miniwave nozzles articulate below PCB. Programs generated via RPS CamConductor programming package. Program via GUI selection relative to imported JPEG and Gerber data images. Virtually unlimited program storage, Windows 7 PC, keyboard, mouse, monitor and monitor mount, software & nozzles included. (Options denoted by *.)

OPERATION

X/Y/Z Control	Stepper Motors
X/Y/Z Motion Accuracy	Lead Screw $\pm .004"$
Interpolated Motion	Yes Simultaneous X, Y and Z
Max Speed ^Ω	X/Y axes @ 5" per second
Max Process Range	16 x 16" 406 x 406 mm
Min/Max PCB Size	2 x 2" to 18 x 20" 51 x 51 mm to 450 x 508 mm
Load Method	Manual Universal PCB Holder

SOLDER PROCESS CONTROL

Approach	360° Access to All Solder Points
Nozzle Material	Wetted Alloy
Nozzle Sizes (ID)	1.5, 2, 2.5, 3, 4, 5, 8, 10, 20 mm & custom
Keep Away	1.5mm Standard
Max Wave Height	6mm Standing Wave Height
Component Max Height	3" Top & Bottom of PCB

FLUX PROCESS CONTROL

Spray Fluxer	Standard
Drop Jet Fluxer*	0.5 - 2mm 14% Solids Max
Ultrasonic Fluxer*	2 - 5mm 40% Solids Max
Dual Fluxers / Chemistry*	Two Independent Nozzles & Plumbing
Flux Capacity	1 Liter Pressurized (per tank)

SOLDER POT MANAGEMENT

Solder Pot Capacity	35 lbs 16 kgs
Temp Control	PID proportioning (0-400°C) $\pm 2^\circ\text{C}$
Heat Time	60 Minutes
HMP Upgrade*	Option
Dross Production	1.5 Ounces per 8 Hours
Maintenance Cycle	80 Hour Pump Clean 30 Minutes

NITROGEN MANAGEMENT

N2 Inertion	RPS DirectHeat™
N2 Temp Control	0-400 °C Closed Loop Adjustable Set Point
N2 Consumption Purity	30 CFH <20 PPM O ₂

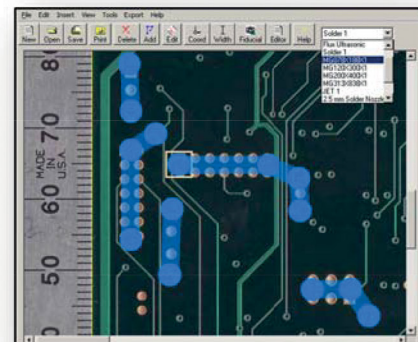
KEY FEATURES & OPTIONS

- | | | |
|----------------------|---------------------------------|---------------------------------------|
| • Steel Welded Frame | • Password Control | • Lifetime Solder Pot Warranty |
| • N2 Temp Control | • Industry Standard Spare Parts | • Drop Jet / Ultrasonic Flux Nozzles* |
| • Custom Nozzles* | • Dual Flux Nozzles* | • Witness Vision* |

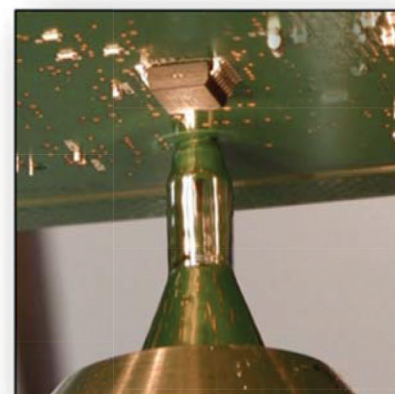
REQUIREMENTS

Safety	UL and CE Compliant	Electrical	208-240 VAC 1Ø 3 Wire 50-60hz 30 amp
Dimension (D-L-H)	48 x 48 x 47"	Air	80 PSI Clean and Dry
Weight	850 lbs 450 kgs	Nitrogen	N ₂ <20 PPM O ₂ 30 SCFH N ₂
Ship Weight	1000 lbs 375 kgs	Exhaust	25 SCFH (ft ³)

[‡] Subject to change without notice. RPS not responsible for typographical errors. ^Ω Process speeds dictated by safety and process requirements.



RPS CamConductor
Rapid Programming



RPS High Precision Soldering
5mm Wave Height
0.5mm Keep Away Ready

FRX 16 Selective Soldering System

FRX16 SELECTIVE SOLDERING SYSTEM | The FRX16 features stepper based XYZ axis motion control articulating the soldering miniwave and fluxer beneath the circuit board. All 3 axes can move in simultaneous coordination. The flux system is mounted to the XYZ table. Process envelope is 16 x 16" (406 x 406 mm).

RPS SYSTEM CONFIGURATION

FRX16 Selective Soldering System | 2014 Model

Stepper based motion control of solder pot, miniwave and fluxer below PCB. Includes Windows 7 OS, RPS Maestrolite operating software and RPS CamConductor programming software, XYZ robotics motion, Solder Management System (pot, pump, riser, nozzles, level sensor, N2 DirectHeat inertion), Flux Management, manual load universal tray, set-up camera, computer, user guides and electrical schematics. Process envelope 16 x 16".

Spray Flux Nozzle | High Durability Universal Flux Nozzle

RPS CamConductor™ Programming Software | Unlimited licenses and free updates.

Two (2) RPS Gaussian MiniWave Nozzles™ | select among mm sizes 2, 2.5, 3, 4, 5, 8

Life Time Solder Pot Warranty | All Solder Pots Lead Free Compatible

One Year System Warranty | All System Components, Excludes Consumables

Support | Phone, Online Support by RPS Factory Technicians. No charge during system warranty.

Installation | RPS technician performs installation over 2 days, includes labor and travel costs.

OPTIONS FOR CONSIDERATION

Sonotek® Ultrasonic Fluxer | Replaces Spray Fluxer, High Precision, High Solids Content Fluxing

REA® Drop Jet Fluxer | Replace Standard Spray Fluxer, High Precision, 14% Solids Max.

Dual Flux | Combine Drop Jet Flux Option with EFD Spray Flux Nozzle, includes separate plumbing, two (2) pressurized flux tanks, independent program control of each flux nozzle

RPS Fiducial Vision | Auto Correct | Detect PCB position, no pass auto stop or auto correct

RPS Live View | HD Witness System w/Color Camera, Dedicated 17" HD Monitor

2nd Solder Pot & Pump Assembly | includes 5 nozzles & cleaning toolkit

Solder Pot Warming Station | Enables 30 minute changeover

Wave Solder Nozzle | specify 2-3.5" width, dedicated pump, N2 shroud, 50 CFH N2 (no pot)

Wave Solder Nozzle/Pot Assembly | specify 2-4" width, dedicated pump, N2 shroud, 50 CFH N2

Solder Management Workstation | Scissor lift and protective side panels for easy transport of solder pots

Annual Spare Parts Kit | As listed in User Guide, consumable, spare parts and tools for normal wear and maintenance over a 2,000 hour production period

Extended Warranty | Additional 12 months (for up to a full 3 years from date of install)

Large RPS Gaussian Miniwave Nozzle | select 10, 15 or 20mm ID

Additional RPS Gaussian Nozzles | select among mm sizes 2, 2.5, 3, 4, 5, 8



SELECTIVE SOLDERING

PREFORMING

DEPANELIZER

FEEDER AND AUTOMATION



SPA NC SOLDERING MACHINE



EBSO SPA 300/400 NC



www.interelectronic.com

1222 Budapest, Gyár St 15.
Phone: +36 1 225-74-15
Phone/Fax: +36 1 207-37-26
E-mail: info@interelectronic.com